



[Go to Product page](#)

Datasheet for ABIN5539045

anti-KIAA1586 antibody (N-Term)

3 Images

Overview

Quantity:	400 µL
Target:	KIAA1586
Binding Specificity:	AA 187-216, N-Term
Reactivity:	Human
Host:	Rabbit
Clonality:	Polyclonal
Conjugate:	This KIAA1586 antibody is un-conjugated
Application:	Western Blotting (WB), Flow Cytometry (FACS), Immunofluorescence (IF), Immunohistochemistry (Paraffin-embedded Sections) (IHC (p))

Product Details

Immunogen:	This KIAA1586 antibody is generated from rabbits immunized with a KLH conjugated synthetic peptide between 187-216 amino acids from the N-terminal region of human KIAA1586.
Isotype:	Ig Fraction
Purification:	This antibody is purified through a protein A column, followed by peptide affinity purification.

Target Details

Target:	KIAA1586
Alternative Name:	KIAA1586 (KIAA1586 Products)
Molecular Weight:	90 kDa

Target Details

Gene ID: 57691

UniProt: [Q9HCI6](#)

Application Details

Application Notes: For WB starting dilution is: 1:1000

For IHC-P starting dilution is: 1:10~50

For FACS starting dilution is: 1:10~50

For IF starting dilution is: 1:10~50

Restrictions: For Research Use only

Handling

Format: Liquid

Concentration: 0.5 mg/mL

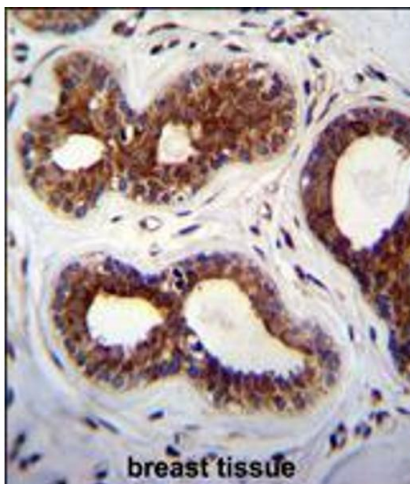
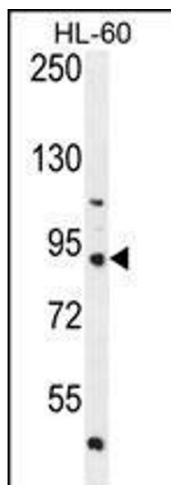
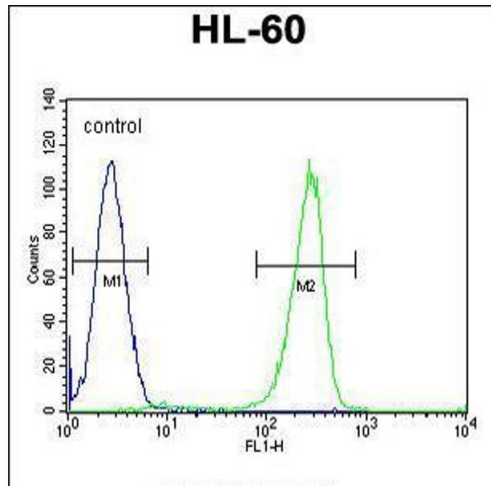
Buffer: Supplied in PBS with 0.09 % (W/V) sodium azide.

Preservative: Sodium azide

Precaution of Use: This product contains Sodium azide: a POISONOUS AND HAZARDOUS SUBSTANCE which should be handled by trained staff only.

Storage: 4 °C,-20 °C

Storage Comment: Store at 4°C for three months and -20°C, stable for up to one year. As with all antibodies care should be taken to avoid repeated freeze thaw cycles. Antibodies should not be exposed to prolonged high temperatures.



Flow Cytometry

Image 1. Flow cytometric analysis of HL-60 cells (right histogram) compared to a negative control cell (left histogram). FITC-conjugated goat-anti-rabbit secondary antibodies were used for the analysis.

Western Blotting

Image 2. Western blot analysis in HL-60 cell line lysates (35ug/lane).

Immunohistochemistry

Image 3. KIAA1586 Antibody immunohistochemistry analysis in formalin fixed and paraffin embedded human breast tissue followed by peroxidase conjugation of the secondary antibody and DAB staining.