



[Go to Product page](#)

Datasheet for ABIN5539149  
**anti-LCO antibody (C-Term)**

1 Image

Overview

Quantity:	400 µL
Target:	LCO
Binding Specificity:	AA 322-350, C-Term
Reactivity:	Human
Host:	Rabbit
Clonality:	Polyclonal
Conjugate:	This LCO antibody is un-conjugated
Application:	Western Blotting (WB)

Product Details

Immunogen:	This LCOR antibody is generated from rabbits immunized with a KLH conjugated synthetic peptide between 322-350 amino acids from the C-terminal region of human LCOR.
Isotype:	Ig Fraction
Purification:	This antibody is purified through a protein A column, followed by peptide affinity purification.

Target Details

Target:	LCO
Alternative Name:	LCO ( <a href="#">LCO Products</a> )
Background:	LCOR is a transcriptional corepressor widely expressed in fetal and adult tissues that is recruited to agonist-bound nuclear receptors through a single LxxLL motif, also referred to as a nuclear receptor (NR) box (Fernandes et al., 2003 [PubMed 12535528]).

## Target Details

Molecular Weight:	47 kDa
Gene ID:	84458
UniProt:	<a href="#">Q96JN0</a>

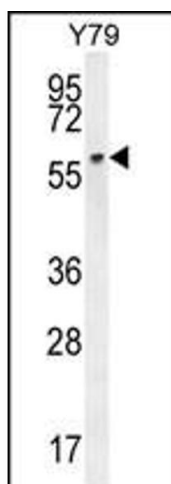
## Application Details

Application Notes:	For WB starting dilution is: 1:1000
Restrictions:	For Research Use only

## Handling

Format:	Liquid
Concentration:	0.5 mg/mL
Buffer:	Supplied in PBS with 0.09 % (W/V) sodium azide.
Preservative:	Sodium azide
Precaution of Use:	This product contains Sodium azide: a POISONOUS AND HAZARDOUS SUBSTANCE which should be handled by trained staff only.
Storage:	4 °C, -20 °C
Storage Comment:	Store at 4°C for three months and -20°C, stable for up to one year. As with all antibodies care should be taken to avoid repeated freeze thaw cycles. Antibodies should not be exposed to prolonged high temperatures.

## Images



### Western Blotting

**Image 1.** Western blot analysis in Y79 cell line lysates (35ug/lane).