

Datasheet for ABIN5539236
anti-CD3G antibody (N-Term)

3 Images

[Go to Product page](#)

Overview

Quantity:	400 µL
Target:	CD3G
Binding Specificity:	AA 48-76, N-Term
Reactivity:	Human
Host:	Rabbit
Clonality:	Polyclonal
Conjugate:	This CD3G antibody is un-conjugated
Application:	Western Blotting (WB), Flow Cytometry (FACS), Immunohistochemistry (Paraffin-embedded Sections) (IHC (p))

Product Details

Immunogen:	This CD3G antibody is generated from rabbits immunized with a KLH conjugated synthetic peptide between 48-76 amino acids from the N-terminal region of human CD3G.
Isotype:	Ig Fraction
Purification:	This antibody is purified through a protein A column, followed by peptide affinity purification.

Target Details

Target:	CD3G
Alternative Name:	CD3G (CD3G Products)
Background:	CD3G is the CD3-gamma polypeptide, which together with CD3-epsilon, -delta and -zeta, and the T-cell receptor alpha/beta and gamma/delta heterodimers, forms the T-cell receptor-CD3

Target Details

complex. This complex plays an important role in coupling antigen recognition to several intracellular signal-transduction pathways. The genes encoding the epsilon, gamma and delta polypeptides are located in the same cluster on chromosome 11. Defects in the CD3G gene are associated with T cell immunodeficiency.

Molecular Weight: 20 kDa

Gene ID: 917

UniProt: [P09693](#)

Pathways: [TCR Signaling](#), [CXCR4-mediated Signaling Events](#)

Application Details

Application Notes: For WB starting dilution is: 1:1000

For IHC-P starting dilution is: 1:10~50

For FACS starting dilution is: 1:10~50

Restrictions: For Research Use only

Handling

Format: Liquid

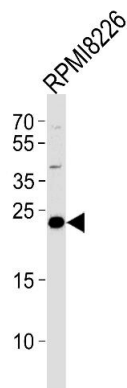
Buffer: Supplied in PBS with 0.09 % (W/V) sodium azide.

Preservative: Sodium azide

Precaution of Use: This product contains Sodium azide: a POISONOUS AND HAZARDOUS SUBSTANCE which should be handled by trained staff only.

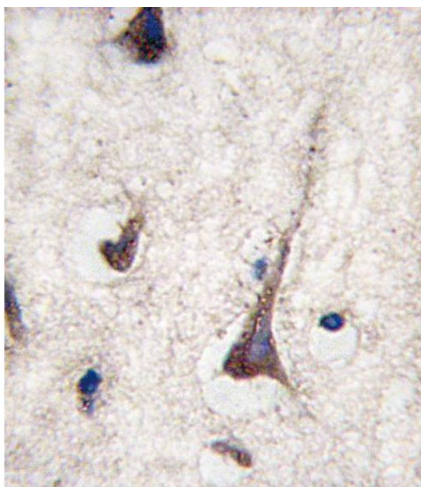
Storage: 4 °C,-20 °C

Storage Comment: Store at 4°C for three months and -20°C, stable for up to one year. As with all antibodies care should be taken to avoid repeated freeze thaw cycles. Antibodies should not be exposed to prolonged high temperatures.



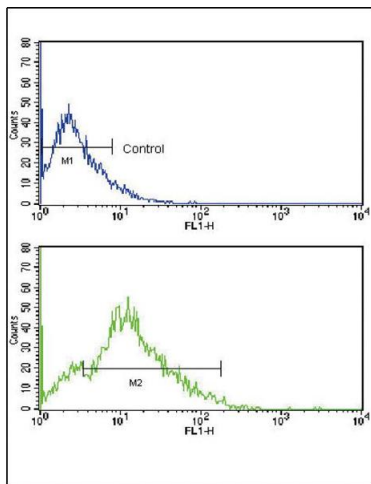
Western Blotting

Image 1. Western blot analysis in RPMI8226 cell line lysates (35ug/lane).



Immunohistochemistry

Image 2. Formalin-fixed and paraffin-embedded human brain tissue reacted with CD3G antibody, which was peroxidase-conjugated to the secondary antibody, followed by DAB staining.



Flow Cytometry

Image 3. Flow cytometric analysis of HL-60 cells using CD3G Antibody (bottom histogram) compared to a negative control cell (top histogram). FITC-conjugated goat-anti-rabbit secondary antibodies were used for the analysis.