

Datasheet for ABIN5539348  
**anti-DIAPH3 antibody (C-Term)**



[Go to Product page](#)

1 Image

## Overview

Quantity:	400 µL
Target:	DIAPH3
Binding Specificity:	AA 1061-1090, C-Term
Reactivity:	Human
Host:	Rabbit
Clonality:	Polyclonal
Conjugate:	This DIAPH3 antibody is un-conjugated
Application:	Western Blotting (WB)

## Product Details

Immunogen:	This DIAPH3 antibody is generated from rabbits immunized with a KLH conjugated synthetic peptide between 1061-1090 amino acids from the C-terminal region of human DIAPH3.
Isotype:	Ig Fraction
Purification:	This antibody is purified through a protein A column, followed by peptide affinity purification.

## Target Details

Target:	DIAPH3
Alternative Name:	DIAPH3 ( <a href="#">DIAPH3 Products</a> )
Background:	DIAPH3 binds to GTP-bound form of Rho and to profilin. Acts in a Rho-dependent manner to recruit profilin to the membrane, where it promotes actin polymerization. It is required for cytokinesis, stress fiber formation, and transcriptional activation of the serum response factor.

## Target Details

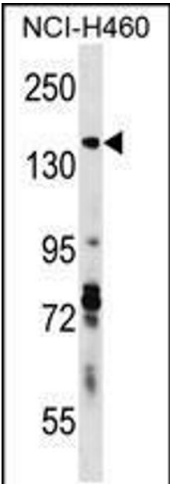
	DFR proteins couple Rho and Src tyrosine kinase during signaling and the regulation of actin dynamics (By similarity).
Molecular Weight:	137 kDa
Gene ID:	81624
UniProt:	<a href="#">Q9NSV4</a>

## Application Details

Application Notes:	For WB starting dilution is: 1:1000
Restrictions:	For Research Use only

## Handling

Format:	Liquid
Concentration:	0.5 mg/mL
Buffer:	Supplied in PBS with 0.09 % (W/V) sodium azide.
Preservative:	Sodium azide
Precaution of Use:	This product contains Sodium azide: a POISONOUS AND HAZARDOUS SUBSTANCE which should be handled by trained staff only.
Storage:	4 °C,-20 °C
Storage Comment:	Store at 4°C for three months and -20°C, stable for up to one year. As with all antibodies care should be taken to avoid repeated freeze thaw cycles. Antibodies should not be exposed to prolonged high temperatures.



Western Blotting

**Image 1.** Western blot analysis in NCI-H460 cell line lysates (35ug/lane).