

Datasheet for ABIN5539371
anti-HAT1 antibody (N-Term)[Go to Product page](#)

1 Image

Overview

Quantity:	400 µL
Target:	HAT1
Binding Specificity:	AA 27-58, N-Term
Reactivity:	Human
Host:	Rabbit
Clonality:	Polyclonal
Conjugate:	This HAT1 antibody is un-conjugated
Application:	Western Blotting (WB)

Product Details

Immunogen:	This KAT1 (HAT1) antibody is generated from rabbits immunized with a KLH conjugated synthetic peptide between 27-58 amino acids from the N-terminal region of human KAT1 (HAT1).
Isotype:	Ig Fraction
Purification:	This antibody is prepared by Saturated Ammonium Sulfate (SAS) precipitation followed by dialysis

Target Details

Target:	HAT1
Alternative Name:	KAT1 (HAT1 Products)
Background:	Histone acetylation, particularly of histone H4, has been proposed to play an important role in

Target Details

replication-dependent nucleosome assembly. The HAT1 protein contains D, A, and B motifs, which are present in many N-acetyltransferases, including those that acetylate substrates other than histones. The HAT1 holoenzyme consists of 2 subunits: the catalytic 46-kD HAT1 and the accessory p46. The p46 subunit stimulated the activity of HAT1 and bound to core histones. The HAT1 holoenzyme acetylated newly synthesized but not nucleosomal histone H4 at lys5 and lys12, and, to a lesser extent, histone H2A at lys5. HAT1 and p46 polypeptides are located in the nucleus of S-phase cells. HAT1 may play a role in telomeric silencing.

Molecular Weight:	50 kDa
-------------------	--------

Gene ID:	8520
----------	------

UniProt:	O14929
----------	------------------------

Application Details

Application Notes:	For WB starting dilution is: 1:1000
--------------------	-------------------------------------

Restrictions:	For Research Use only
---------------	-----------------------

Handling

Format:	Liquid
---------	--------

Concentration:	2 mg/mL
----------------	---------

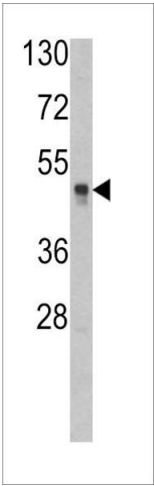
Buffer:	Supplied in PBS with 0.09 % (W/V) sodium azide.
---------	---

Preservative:	Sodium azide
---------------	--------------

Precaution of Use:	This product contains Sodium azide: a POISONOUS AND HAZARDOUS SUBSTANCE which should be handled by trained staff only.
--------------------	--

Storage:	4 °C, -20 °C
----------	--------------

Storage Comment:	Store at 4°C for three months and -20°C, stable for up to one year. As with all antibodies care should be taken to avoid repeated freeze thaw cycles. Antibodies should not be exposed to prolonged high temperatures.
------------------	--



Western Blotting

Image 1. Western blot analysis of KAT1 (HAT1) Antibody in HL60 cell line lysates (35ug/lane)