



[Go to Product page](#)

Datasheet for ABIN5539458  
**anti-SLC7A6 antibody (N-Term)**

1 Image

Overview

Quantity:	100 µg
Target:	SLC7A6
Binding Specificity:	N-Term
Reactivity:	Human
Host:	Goat
Clonality:	Polyclonal
Conjugate:	This SLC7A6 antibody is un-conjugated
Application:	ELISA, Western Blotting (WB), Immunohistochemistry (IHC)

Product Details

Purpose:	SLC7A6 / y+LAT-2
Sequence:	PNTSQSQVEE DVSSP
Isotype:	IgG
Specificity:	Reported variants represent identical protein: NP_003974.3, NP_001070253.1
Cross-Reactivity:	Human
Purification:	Purified from goat serum by ammonium sulphate precipitation followed by antigen affinity chromatography using the immunizing peptide.
Grade:	Verified

## Target Details

---

Target:	SLC7A6
Alternative Name:	SLC7A6 ( <a href="#">SLC7A6 Products</a> )
Background:	SLC7A6, solute carrier family 7 (amino acid transporter light chain, y+L system), member 6, LAT-2, LAT3, y+LAT-2, Y+L amino acid transporter 2, amino acid permease, cationic amino acid transporter, y+ system, solute carrier family 7 (cationic amino acid t
Gene ID:	9057
NCBI Accession:	<a href="#">NP_003974</a>

## Application Details

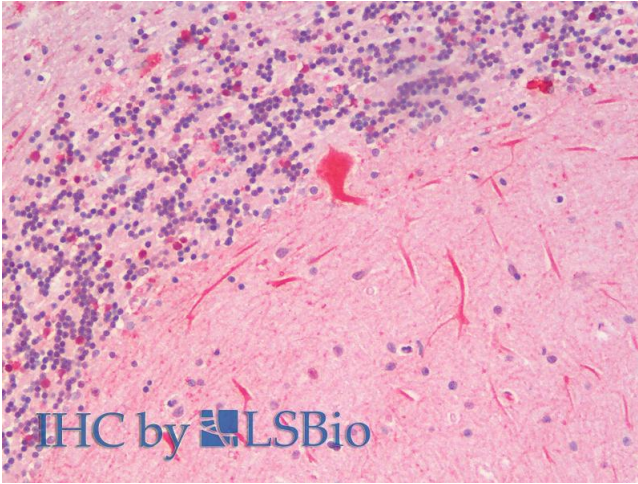
---

Application Notes:	Immunohistochemistry: Paraffin embedded Human Brain (Cerebellum). Recommended concentration: 5 µg/mL. Western Blot: Approx 55-58 kDa band observed in Human Placenta lysates (calculated MW of 56.8 kDa according to NP_003974.3. Recommended concentration: 0.3-1 µg/mL. Primary incubation was 1 hour. Peptide ELISA: antibody detection limit dilution 1:128000.
Restrictions:	For Research Use only

## Handling

---

Format:	Liquid
Concentration:	0.5 mg/mL
Buffer:	Supplied at 0.5 mg/mL in Tris saline, 0.02 % sodium azide, pH 7.3 with 0.5 % bovine serum albumin.
Preservative:	Sodium azide
Precaution of Use:	This product contains Sodium azide: a POISONOUS AND HAZARDOUS SUBSTANCE which should be handled by trained staff only.
Handling Advice:	Minimize freezing and thawing.
Storage:	-20 °C
Storage Comment:	Aliquot and store at -20°C, with minimal freeze/thawing. A working aliquot may be refrigerated at 4°C for a few weeks and still remain viable.



### Immunohistochemistry

**Image 1.** ABIN5539458 (5µg/ml) staining of paraffin embedded Human Cerebellum. Steamed antigen retrieval with citrate buffer pH 6, AP-staining.