

Datasheet for ABIN5539460

## anti-Interleukin enhancer-binding factor 3 (ILF3) (Internal Region) antibody



[Go to Product page](#)

### 1 Image

#### Overview

Quantity:	100 µg
Target:	Interleukin enhancer-binding factor 3 (ILF3)
Binding Specificity:	Internal Region
Reactivity:	Human
Host:	Goat
Clonality:	Polyclonal
Conjugate:	Un-conjugated
Application:	Immunohistochemistry (IHC), ELISA

#### Product Details

Purpose:	ILF3
Sequence:	QKPSYGSGYQ SHQGQ
Isotype:	IgG
Specificity:	This antibody is expected to recognize isoforms a (NP_036350.2) and d (NP_060090.2).
Cross-Reactivity:	Cow, Dog, Human, Rat
Purification:	Purified from goat serum by ammonium sulphate precipitation followed by antigen affinity chromatography using the immunizing peptide.
Grade:	Verified

## Target Details

---

Target:	Interleukin enhancer-binding factor 3 (ILF3)
Alternative Name:	ILF3 ( <a href="#">ILF3 Products</a> )
Background:	ILF3, interleukin enhancer binding factor 3, 90 kDa, DRBF, MMP4, MPHOSPH4, MPP4, NF-AT-90, NF90, NFAR, TCP80, M-phase phosphoprotein 4, dsRNA binding protein NFAR-2/MPP4, interleukin enhancer binding factor 3, nuclear factor associated with dsRNA, nuclear
Gene ID:	3609
NCBI Accession:	<a href="#">NP_036350</a> , <a href="#">NP_060090</a>
Pathways:	<a href="#">M Phase</a>

## Application Details

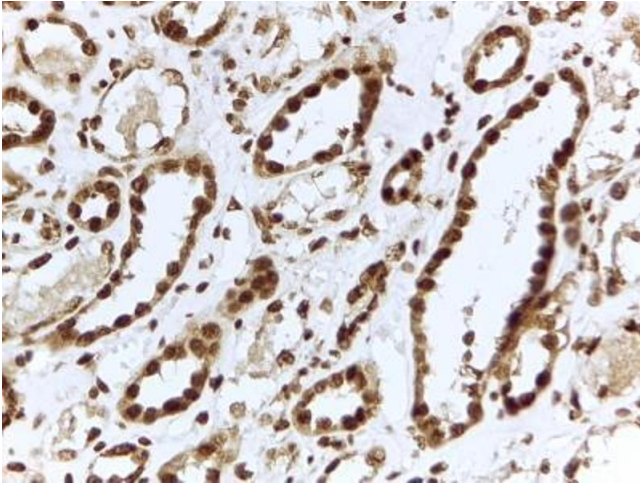
---

Application Notes:	Immunohistochemistry: In paraffin embedded Human Kidney shows nuclear staining in convoluted tubules. Recommended concentration, 2-4 µg/mL. Peptide ELISA: antibody detection limit dilution 1:32000.
Restrictions:	For Research Use only

## Handling

---

Format:	Liquid
Concentration:	0.5 mg/mL
Buffer:	Supplied at 0.5 mg/mL in Tris saline, 0.02 % sodium azide, pH 7.3 with 0.5 % bovine serum albumin.
Preservative:	Sodium azide
Precaution of Use:	This product contains Sodium azide: a POISONOUS AND HAZARDOUS SUBSTANCE which should be handled by trained staff only.
Handling Advice:	Minimize freezing and thawing.
Storage:	-20 °C
Storage Comment:	Aliquot and store at -20°C, with minimal freeze/thawing. A working aliquot may be refrigerated at 4°C for a few weeks and still remain viable.



#### Immunohistochemistry

**Image 1.** ABIN5539460 (2 $\mu$ g/ml) staining of paraffin embedded Human Kidney. Steamed antigen retrieval with citrate buffer pH 6, HRP-staining.