

Datasheet for ABIN5539462
anti-PI15 antibody (AA 128-141)[Go to Product page](#)

2 Images

Overview

Quantity:	100 µg
Target:	PI15
Binding Specificity:	AA 128-141
Reactivity:	Human
Host:	Goat
Clonality:	Polyclonal
Conjugate:	This PI15 antibody is un-conjugated
Application:	Western Blotting (WB), ELISA, Immunohistochemistry (IHC)

Product Details

Purpose:	PI15 (aa128-141)
Sequence:	RTGRYRSILQ LVKP
Isotype:	IgG
Cross-Reactivity:	Cow, Dog, Human, Mouse, Pig, Rat
Purification:	Purified from goat serum by ammonium sulphate precipitation followed by antigen affinity chromatography using the immunizing peptide.
Grade:	Verified

Target Details

Target:	PI15
---------	------

Target Details

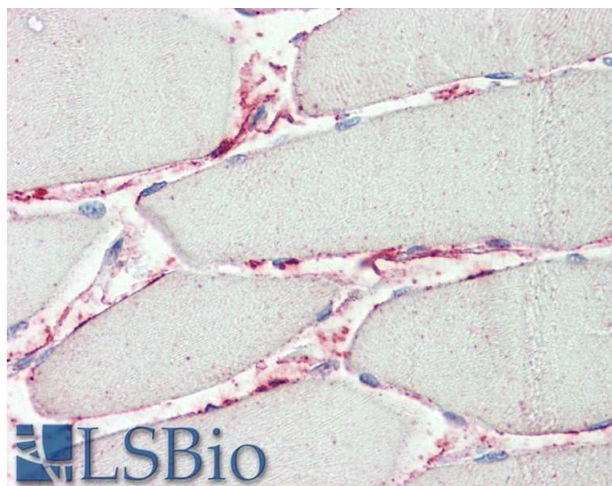
Alternative Name:	PI15 (PI15 Products)
Background:	PI15, peptidase inhibitor 15, CRISP8, DKFZp686F0366, P24TI, P25TI, 25 kDa trypsin inhibitor, CRISP-8, PI-15, cysteine-rich secretory protein 8, protease inhibitor 15, sugarCrisp
Gene ID:	51050, 94227, 301489
NCBI Accession:	NP_056970

Application Details

Application Notes:	Immunohistochemistry: Paraffin embedded Human Skeletal Muscle. Recommended concentration: 5 µg/mL. Western Blot: Approx 33 kDa band observed in lysates of cell line HeLa (calculated MW of 29.1 kDa according to NP_056970.1). Recommended concentration: 0.3-1 µg/mL. Preliminary testing was unsuccessful on Mouse and Rat Brain for this particular batch. Peptide ELISA: antibody detection limit dilution 1:1000.
Restrictions:	For Research Use only

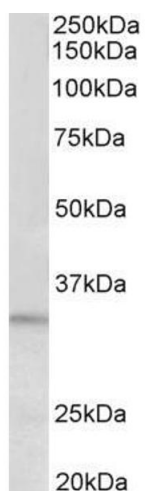
Handling

Format:	Liquid
Concentration:	0.5 mg/mL
Buffer:	Supplied at 0.5 mg/mL in Tris saline, 0.02 % sodium azide, pH 7.3 with 0.5 % bovine serum albumin.
Preservative:	Sodium azide
Precaution of Use:	This product contains Sodium azide: a POISONOUS AND HAZARDOUS SUBSTANCE which should be handled by trained staff only.
Handling Advice:	Minimize freezing and thawing.
Storage:	-20 °C
Storage Comment:	Aliquot and store at -20°C, with minimal freeze/thawing. A working aliquot may be refrigerated at 4°C for a few weeks and still remain viable.



Immunohistochemistry

Image 1. ABIN5539462 (5µg/ml) staining of paraffin embedded Human Skeletal Muscle. Steamed antigen retrieval with citrate buffer pH 6, AP-staining.



Western Blotting

Image 2. EB011365 (0.3µg/ml) staining of HeLa lysate (35µg protein in RIPA buffer). Primary incubation was 1 hour. Detected by chemiluminescence.