

Datasheet for ABIN5539469

anti-ALDH6A1 antibody (AA 487-496) (Biotin)[Go to Product page](#)**1** Image

Overview

Quantity:	100 µg
Target:	ALDH6A1
Binding Specificity:	AA 487-496
Reactivity:	Human, Mouse, Rat
Host:	Goat
Clonality:	Polyclonal
Conjugate:	This ALDH6A1 antibody is conjugated to Biotin
Application:	Western Blotting (WB), ELISA, Immunohistochemistry (IHC)

Product Details

Purpose:	ALDH6A1 (aa487-496), Biotinylated
Sequence:	SRSSFRGDTN .
Isotype:	IgG
Specificity:	This antibody is expected to recognize all three reported isoform (NP_005580.1, NP_001265522.1, NP_001265523.1).
Cross-Reactivity:	Cow, Dog, Human, Mouse, Pig, Rat
Purification:	Purified from goat serum by ammonium sulphate precipitation followed by antigen affinity chromatography using the immunizing peptide.
Grade:	Verified

Target Details

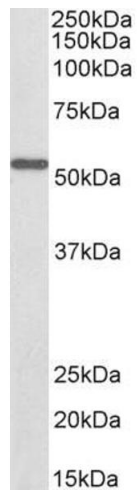
Target:	ALDH6A1
Alternative Name:	ALDH6A1 (ALDH6A1 Products)
Background:	ALDH6A1, aldehyde dehydrogenase 6 family member A1, MMSADHA, MMSDH, aldehyde dehydrogenase 6 family, member A1, malonate-semialdehyde dehydrogenase, mitochondrial acylating methylmalonate-semialdehyde dehydrogenase, testicular tissue protein Li 122
Gene ID:	4329, 104776, 81708
NCBI Accession:	NP_005580 , NP_001265522 , NP_001265523
Pathways:	Brown Fat Cell Differentiation

Application Details

Application Notes:	Western Blot: Approx 55 kDa band observed in Mouse Kidney lysates (calculated MW of 57.9 kDa according to Mouse NP_598803.1). See non-biotinylated parental product's datasheet for further QC data. Recommended concentration: 0.1-0.3 µg/mL. Peptide ELISA: antibody detection limit dilution 1:32000.
Restrictions:	For Research Use only

Handling

Format:	Liquid
Concentration:	0.5 mg/mL
Buffer:	Supplied at 0.5 mg/mL in Tris saline, 0.02 % sodium azide, pH 7.3 with 0.5 % bovine serum albumin.
Preservative:	Sodium azide
Precaution of Use:	This product contains Sodium azide: a POISONOUS AND HAZARDOUS SUBSTANCE which should be handled by trained staff only.
Handling Advice:	Minimize freezing and thawing.
Storage:	-20 °C
Storage Comment:	Aliquot and store at -20°C, with minimal freeze/thawing. A working aliquot may be refrigerated at 4°C for a few weeks and still remain viable.



Western Blotting

Image 1. Biotinylated ABIN5539469 (0.1µg/ml) staining of Mouse Kidney lysate (35µg protein in RIPA buffer), exactly mirroring its parental non-biotinylated product. Primary incubation was 1 hour. Detected by chemiluminescence, using streptavidin-HRP and using NAP blocker as a substitute for skimmed milk.