



[Go to Product page](#)

Datasheet for ABIN5539502  
**anti-CX3CR1 antibody (AA 34-47)**

1 Image

Overview

Quantity:	100 µg
Target:	CX3CR1
Binding Specificity:	AA 34-47
Reactivity:	Human
Host:	Goat
Clonality:	Polyclonal
Conjugate:	This CX3CR1 antibody is un-conjugated
Application:	Western Blotting (WB), ELISA

Product Details

Purpose:	CX3CR1 (aa34-47)
Sequence:	DQFPESVTEN FEYD
Isotype:	IgG
Specificity:	This antibody is expected to recognize both reported isoforms (NP_001164645.1, NP_001328.1). Reported variants represent identical protein: NP_001164643.1, NP_001328.1, NP_001164642.1.
Cross-Reactivity:	Human
Purification:	Purified from goat serum by ammonium sulphate precipitation followed by antigen affinity chromatography using the immunizing peptide.
Grade:	Verified

## Target Details

---

Target:	CX3CR1
Alternative Name:	CX3CR1 ( <a href="#">CX3CR1 Products</a> )
Background:	CX3CR1, chemokine (C-X3-C motif) receptor 1, CCRL1, CMKBRL1, CMKDR1, GPR13, GPRV28, V28, C-X3-C CKR-1, CMK-BRL-1, CMK-BRL1, CX3C chemokine receptor 1, G protein-coupled receptor 13, G-protein coupled receptor 13, beta chemokine receptor-like 1
Gene ID:	1524
NCBI Accession:	<a href="#">NP_001164645</a> , <a href="#">NP_001328</a>
Pathways:	<a href="#">Cellular Response to Molecule of Bacterial Origin</a>

## Application Details

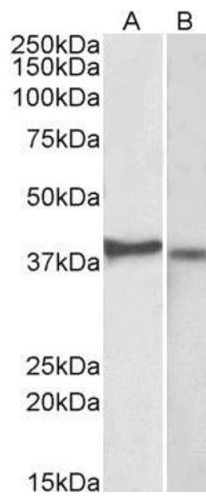
---

Application Notes:	Western Blot: Approx 39 kDa band observed in lysates of cell line Kelly and 37 kDa in lysates of cell line U251-MG (calculated MW of 40.4 kDa according to NP_001328.1). Recommended concentration: 1-3 µg/mL. Peptide ELISA: antibody detection limit dilution 1:128000.
Restrictions:	For Research Use only

## Handling

---

Format:	Liquid
Concentration:	0.5 mg/mL
Buffer:	Supplied at 0.5 mg/mL in Tris saline, 0.02 % sodium azide, pH 7.3 with 0.5 % bovine serum albumin.
Preservative:	Sodium azide
Precaution of Use:	This product contains Sodium azide: a POISONOUS AND HAZARDOUS SUBSTANCE which should be handled by trained staff only.
Handling Advice:	Minimize freezing and thawing.
Storage:	-20 °C
Storage Comment:	Aliquot and store at -20°C, with minimal freeze/thawing. A working aliquot may be refrigerated at 4°C for a few weeks and still remain viable.



### Western Blotting

**Image 1.** ABIN5539502 (2µg/ml) staining of Kelly (A) and U251-MG (B) lysates (35µg protein in RIPA buffer). Primary incubation was 1 hour. Detected by chemiluminescence.