



[Go to Product page](#)

Datasheet for ABIN5539508  
**anti-EGF antibody (Internal Region)**

2 Images

Overview

Quantity:	100 µg
Target:	EGF
Binding Specificity:	Internal Region
Reactivity:	Human
Host:	Goat
Clonality:	Polyclonal
Conjugate:	This EGF antibody is un-conjugated
Application:	Western Blotting (WB), ELISA, Immunohistochemistry (IHC)

Product Details

Purpose:	Pro-EGF
Sequence:	SRQERVCNIE KNVS
Isotype:	IgG
Specificity:	This antibody is expected to recognize all reported isoforms (NP_001954.2, NP_001171601.1, NP_001171602.1), but not the mature form. The immunizing peptide represents part of the extracellular domain.
Cross-Reactivity:	Dog, Human
Purification:	Purified from goat serum by ammonium sulphate precipitation followed by antigen affinity chromatography using the immunizing peptide.
Grade:	Verified

## Target Details

---

Target:	EGF
Alternative Name:	EGF ( <a href="#">EGF Products</a> )
Background:	EGF, epidermal growth factor, HOMG4, URG, OTTHUMP00000162922, OTTHUMP00000219721, OTTHUMP00000219722, beta-urogastrone, pro-epidermal growth factor
Gene ID:	1950
NCBI Accession:	<a href="#">NP_001954</a> , <a href="#">NP_001171601</a> , <a href="#">NP_001171602</a>
Pathways:	<a href="#">NF-kappaB Signaling</a> , <a href="#">RTK Signaling</a> , <a href="#">Fc-epsilon Receptor Signaling Pathway</a> , <a href="#">EGFR Signaling Pathway</a> , <a href="#">Neurotrophin Signaling Pathway</a> , <a href="#">Regulation of Carbohydrate Metabolic Process</a> , <a href="#">Hepatitis C</a> , <a href="#">Protein targeting to Nucleus</a> , <a href="#">Interaction of EGFR with phospholipase C-gamma</a> , <a href="#">Thromboxane A2 Receptor Signaling</a> , <a href="#">EGFR Downregulation</a>

## Application Details

---

Application Notes:	Immunohistochemistry: Paraffin embedded Human Skin. Recommended concentration: 5 µg/mL. Western Blot: Approx 160 kDa double band observed in Human Prostate lysates (calculated MW of 134 kDa according to NP_001954.2). The two bands represent glycosylated forms of the mature protein. Recommended concentration: 1-3 µg/mL. Primary incubation was 1 Peptide ELISA: antibody detection limit dilution 1:128000.
Restrictions:	For Research Use only

## Handling

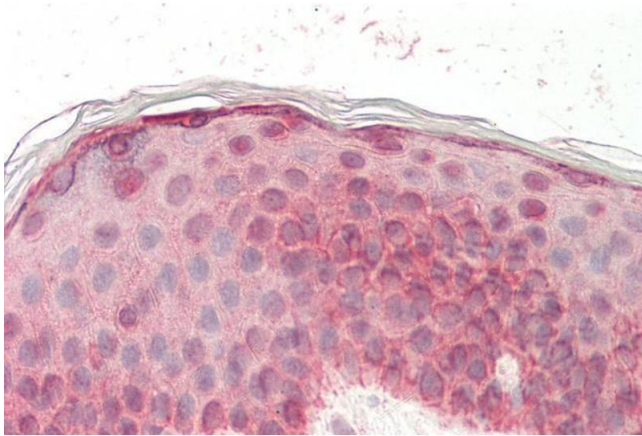
---

Format:	Liquid
Concentration:	0.5 mg/mL
Buffer:	Supplied at 0.5 mg/mL in Tris saline, 0.02 % sodium azide, pH 7.3 with 0.5 % bovine serum albumin.
Preservative:	Sodium azide
Precaution of Use:	This product contains Sodium azide: a POISONOUS AND HAZARDOUS SUBSTANCE which should be handled by trained staff only.
Handling Advice:	Minimize freezing and thawing.
Storage:	-20 °C

## Handling

Storage Comment: Aliquot and store at -20°C, with minimal freeze/thawing. A working aliquot may be refrigerated at 4°C for a few weeks and still remain viable.

## Images



### Immunohistochemistry

**Image 1.** ABIN5539508 (5µg/ml) staining of paraffin embedded Human Skin. Steamed antigen retrieval with citrate buffer pH 6, AP-staining.



### Western Blotting

**Image 2.** ABIN5539508 (1µg/ml) staining of Human Prostate lysate (35µg protein in RIPA buffer). Detected by chemiluminescence.