

Datasheet for ABIN5539511
anti-COPA antibody (Internal Region)[Go to Product page](#)

1 Image

Overview

Quantity:	100 µg
Target:	COPA
Binding Specificity:	Internal Region
Reactivity:	Human
Host:	Goat
Clonality:	Polyclonal
Conjugate:	This COPA antibody is un-conjugated
Application:	Western Blotting (WB), ELISA

Product Details

Purpose:	COPA
Sequence:	CTRASNLENS T
Isotype:	IgG
Specificity:	This antibody is expected to recognize both reported isoforms (NP_001091868.1, NP_004362.2).
Cross-Reactivity:	Cow, Human, Mouse, Pig, Rat
Purification:	Purified from goat serum by ammonium sulphate precipitation followed by antigen affinity chromatography using the immunizing peptide.
Grade:	Verified

Target Details

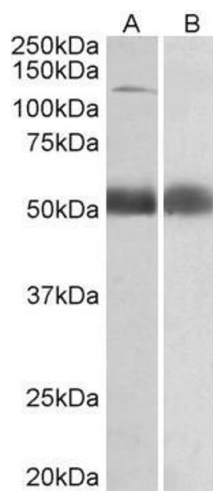
Target:	COPA
Alternative Name:	COPA (COPA Products)
Background:	COPA, coatomer protein complex, subunit alpha, FLJ26320, HEP-COP, alpha coat protein, xenin
Gene ID:	1314, 12847, 304978
NCBI Accession:	NP_001091868 , NP_004362
Pathways:	Hormone Activity

Application Details

Application Notes:	Western Blot: Approx 140 kDa band observed in Human Prostate lysates (calculated MW of 138 kDa according to NP_001091868.1 and NP_004362.2). Recommended concentration: 0.5-2 µg/mL. An additional band of 52 kDa was consistently observed, however this band was Peptide ELISA: antibody detection limit dilution 1:1000.
Restrictions:	For Research Use only

Handling

Format:	Liquid
Concentration:	0.5 mg/mL
Buffer:	Supplied at 0.5 mg/mL in Tris saline, 0.02 % sodium azide, pH 7.3 with 0.5 % bovine serum albumin.
Preservative:	Sodium azide
Precaution of Use:	This product contains Sodium azide: a POISONOUS AND HAZARDOUS SUBSTANCE which should be handled by trained staff only.
Handling Advice:	Minimize freezing and thawing.
Storage:	-20 °C
Storage Comment:	Aliquot and store at -20°C, with minimal freeze/thawing. A working aliquot may be refrigerated at 4°C for a few weeks and still remain viable.



Western Blotting

Image 1. ABIN5539511 (0.5µg/ml) staining of Human Prostate lysate (35µg protein in RIPA buffer) with (B) and without (A) blocking with the immunizing peptide. Primary incubation was 1 hour. Detected by chemiluminescence.