

Datasheet for ABIN5539512  
**anti-Contactin 1 antibody (Internal Region)**



[Go to Product page](#)

3 Images

Overview

Quantity:	100 µg
Target:	Contactin 1 (CNTN1)
Binding Specificity:	Internal Region
Reactivity:	Human, Rat, Mouse, Pig
Host:	Goat
Clonality:	Polyclonal
Conjugate:	This Contactin 1 antibody is un-conjugated
Application:	Western Blotting (WB), ELISA, Immunohistochemistry (IHC)

Product Details

Purpose:	contactin 1
Sequence:	ENIRGKDKHQ AR
Isotype:	IgG
Specificity:	This antibody is expected to recognize all reported isoforms (NP_001834.2, NP_778203.1, NP_001242992.1). Reported variants represent identical protein: NP_001242993.1, NP_001242992.1.
Cross-Reactivity:	Human, Mouse, Pig, Rat
Purification:	Purified from goat serum by ammonium sulphate precipitation followed by antigen affinity chromatography using the immunizing peptide.
Grade:	Verified

## Target Details

---

Target:	Contactin 1 (CNTN1)
Alternative Name:	CNTN1 ( <a href="#">CNTN1 Products</a> )
Background:	CNTN1, contactin 1, F3, GP135, contactin-1, glycoprotein gP135, neural cell surface protein F3
Gene ID:	1272, 12805, 117258
NCBI Accession:	<a href="#">NP_001834</a> , <a href="#">NP_778203</a> , <a href="#">NP_001242992</a>

## Application Details

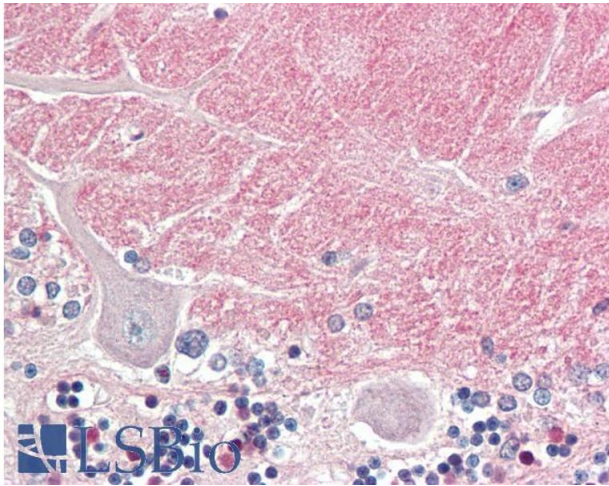
---

Application Notes:	<p>Immunohistochemistry: Paraffin embedded Human Brain (Cerebellum). Recommended concentration: 5 µg/mL.</p> <p>Western Blot: Approx 140 kDa band observed in Human, Mouse, Rat and Pig Brain lysates (calculated MW of 113 kDa according to NP_001834.2). The observed molecular weight corresponds to the glycosylated form. Recommended concentration: 0.3-1 µg/mL. Primary in Peptide ELISA: antibody detection limit dilution 1:32000.</p>
Restrictions:	For Research Use only

## Handling

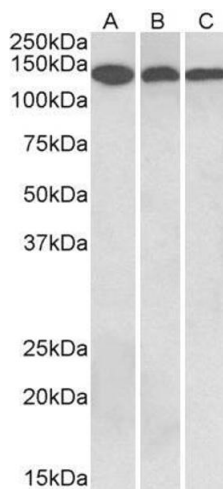
---

Format:	Liquid
Concentration:	0.5 mg/mL
Buffer:	Supplied at 0.5 mg/mL in Tris saline, 0.02 % sodium azide, pH 7.3 with 0.5 % bovine serum albumin.
Preservative:	Sodium azide
Precaution of Use:	This product contains Sodium azide: a POISONOUS AND HAZARDOUS SUBSTANCE which should be handled by trained staff only.
Handling Advice:	Minimize freezing and thawing.
Storage:	-20 °C
Storage Comment:	Aliquot and store at -20°C, with minimal freeze/thawing. A working aliquot may be refrigerated at 4°C for a few weeks and still remain viable.



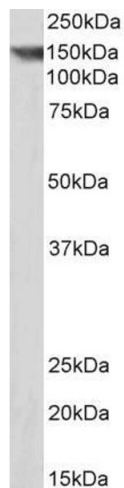
### Immunohistochemistry

**Image 1.** ABIN5539512 (5µg/ml) staining of paraffin embedded Human Cerebellum. Steamed antigen retrieval with citrate buffer pH 6, AP-staining.



### Western Blotting

**Image 2.** ABIN5539512 (0.3µg/ml) staining of Human Cerebellum (A), Mouse Brain (B) and Rat Brain (C) lysates (35µg protein in RIPA buffer). Detected by chemiluminescence.



### Western Blotting

**Image 3.** ABIN5539512 (0.3µg/ml) staining of Pig Brain lysate (35µg protein in RIPA buffer). Detected by chemiluminescence.