

Datasheet for ABIN5539520

**anti-FHL1 antibody (Internal Region) (Biotin)**[Go to Product page](#)**1** Image

## Overview

Quantity:	100 µg
Target:	FHL1
Binding Specificity:	Internal Region
Reactivity:	Human, Mouse
Host:	Goat
Clonality:	Polyclonal
Conjugate:	This FHL1 antibody is conjugated to Biotin
Application:	Western Blotting (WB), ELISA, Immunohistochemistry (IHC)

## Product Details

Purpose:	FHL1 / SLIM1, Biotinylated
Sequence:	CNKRFVFHNE QVY.
Isotype:	IgG
Specificity:	<p>This antibody is expected to recognise isoforms 2 (NP_001440.1) and 5 (NP_001153171.1). Since June 2009 the second N residue in the immunizing peptide is no longer representative as it has been substituted by Q at position 284 of NP_001440.2. Variants NP_001440.2, NP_001153176.1 and NP_001153172.1 represent identical protein.</p>
Predicted Reactivity:	Human, Mouse, Rat, Dog, Pig, Cow
Purification:	Purified from goat serum by ammonium sulphate precipitation followed by antigen affinity chromatography using the immunizing peptide.

## Product Details

Grade: Verified

## Target Details

Target: FHL1

Alternative Name: FHL1 ([FHL1 Products](#))

Background: FHL1, four and a half LIM domains 1, FHL-1, FHL1A, FHL1B, FLH1A, KYOT, SLIM, SLIM-1, SLIM1, SLIMMER, XMPMA, LIM protein SLIMMER, four-and-a-half Lin11, Isl-1 and Mec-3 domains 1, skeletal muscle LIM-protein 1

Gene ID: 2273

NCBI Accession: [NP\\_001440](#), [NP\\_001153171](#)

## Application Details

Application Notes: DS WB Results: Approx 30 kDa band observed in Human Heart lysates (calculated MW of 31.9 kDa according to NP\_001440.2). See non-biotinylated parental product's datasheet for further QC data. Recommended concentration: 0.3-1 µg/mL.  
Peptide ELISA: antibody detection limit dilution 1:16000.

Restrictions: For Research Use only

## Handling

Format: Liquid

Concentration: 0.5 mg/mL

Buffer: Supplied at 0.5 mg/mL in Tris saline, 0.02 % sodium azide, pH 7.3 with 0.5 % bovine serum albumin.

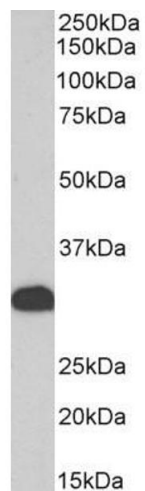
Preservative: Sodium azide

Precaution of Use: This product contains Sodium azide: a POISONOUS AND HAZARDOUS SUBSTANCE which should be handled by trained staff only.

Handling Advice: Minimize freezing and thawing.

Storage: -20 °C

Storage Comment: Aliquot and store at -20°C, with minimal freeze/thawing. A working aliquot may be refrigerated at 4°C for a few weeks and still remain viable.



### Western Blotting

**Image 1.** Biotinylated ABIN5539520 (0.3µg/ml) staining of Human Heart lysate (35µg protein in RIPA buffer), exactly mirroring its parental non-biotinylated product. Primary incubation was 1 hour. Detected by chemiluminescence, using streptavidin-HRP and using NAP blocker as a substitute for skimmed milk.