

Datasheet for ABIN5539525

## anti-FGF13 antibody (Internal Region)



[Go to Product page](#)

### 1 Image

#### Overview

Quantity:	100 µg
Target:	FGF13
Binding Specificity:	Internal Region
Reactivity:	Mouse
Host:	Goat
Clonality:	Polyclonal
Conjugate:	This FGF13 antibody is un-conjugated
Application:	Western Blotting (WB), ELISA

#### Product Details

Purpose:	FGF13 (isoform 1)
Sequence:	KGKTSCDKNK LNVFS
Isotype:	IgG
Specificity:	This antibody is expected to recognize isoform 1 (NP_004105.1) only. Reported variants represent identical protein: NP_001132974.1, NP_001132973.1
Cross-Reactivity:	Cow, Dog, Human, Mouse, Pig
Purification:	Purified from goat serum by ammonium sulphate precipitation followed by antigen affinity chromatography using the immunizing peptide.
Grade:	Verified

## Target Details

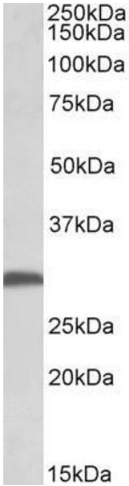
Target:	FGF13
Alternative Name:	FGF13 ( <a href="#">FGF13 Products</a> )
Background:	FGF13, fibroblast growth factor 13, FGF-13, FGF2, FHF-2, FHF2, fibroblast growth factor homologous factor 2
Gene ID:	2258, 14168
NCBI Accession:	<a href="#">NP_004105</a>
Pathways:	<a href="#">Regulation of Cell Size</a>

## Application Details

Application Notes:	Western Blot: Approx 28 kDa band observed in Mouse Brain lysates (calculated MW of 27.6 kDa according to NP_034330.2). Recommended concentration: 0.3-1 µg/mL. Peptide ELISA: antibody detection limit dilution 1:32000.
Restrictions:	For Research Use only

## Handling

Format:	Liquid
Concentration:	0.5 mg/mL
Buffer:	Supplied at 0.5 mg/mL in Tris saline, 0.02 % sodium azide, pH 7.3 with 0.5 % bovine serum albumin.
Preservative:	Sodium azide
Precaution of Use:	This product contains Sodium azide: a POISONOUS AND HAZARDOUS SUBSTANCE which should be handled by trained staff only.
Handling Advice:	Minimize freezing and thawing.
Storage:	-20 °C
Storage Comment:	Aliquot and store at -20°C, with minimal freeze/thawing. A working aliquot may be refrigerated at 4°C for a few weeks and still remain viable.



Western Blotting

**Image 1.** ABIN5539525 (0.5µg/ml) staining of Mouse Brain lysate (35µg protein in RIPA buffer). Primary incubation was 1 hour. Detected by chemiluminescence.