

Datasheet for ABIN5539533  
**anti-GPC1 antibody (Internal Region)**[Go to Product page](#)

## 1 Image

## Overview

Quantity:	100 µg
Target:	GPC1
Binding Specificity:	Internal Region
Reactivity:	Human
Host:	Goat
Clonality:	Polyclonal
Conjugate:	This GPC1 antibody is un-conjugated
Application:	Western Blotting (WB), ELISA

## Product Details

Purpose:	Glypican-1
Sequence:	TDKFWGTSGV ES
Isotype:	IgG
Cross-Reactivity:	Human
Purification:	Purified from goat serum by ammonium sulphate precipitation followed by antigen affinity chromatography using the immunizing peptide.
Grade:	Verified

## Target Details

Target:	GPC1
---------	------

## Target Details

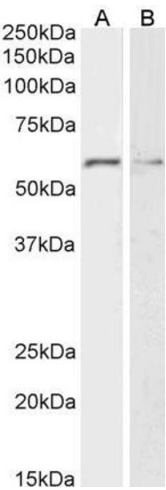
Alternative Name:	GPC1 ( <a href="#">GPC1 Products</a> )
Background:	GPC1, glypican 1, glypican, glypican proteoglycan 1, glypican-1
Gene ID:	2817
NCBI Accession:	<a href="#">NP_002072</a>
Pathways:	<a href="#">Glycosaminoglycan Metabolic Process</a> , <a href="#">Regulation of Muscle Cell Differentiation</a>

## Application Details

Application Notes:	Western Blot: Approx 60 kDa band observed in lysates of cell lines HeLa and K562 (calculated MW of 61.7 kDa according to NP_002072.2). Recommended concentration: 1-3 µg/mL. Peptide ELISA: antibody detection limit dilution 1:16000.
Restrictions:	For Research Use only

## Handling

Format:	Liquid
Concentration:	0.5 mg/mL
Buffer:	Supplied at 0.5 mg/mL in Tris saline, 0.02 % sodium azide, pH 7.3 with 0.5 % bovine serum albumin.
Preservative:	Sodium azide
Precaution of Use:	This product contains Sodium azide: a POISONOUS AND HAZARDOUS SUBSTANCE which should be handled by trained staff only.
Handling Advice:	Minimize freezing and thawing.
Storage:	-20 °C
Storage Comment:	Aliquot and store at -20°C, with minimal freeze/thawing. A working aliquot may be refrigerated at 4°C for a few weeks and still remain viable.



Western Blotting

**Image 1.** ABIN5539533 (2µg/ml) staining of HeLa (A) and K562 (B) lysates (35µg protein in RIPA buffer). Primary incubation was 1 hour. Detected by chemiluminescence.