

Datasheet for ABIN5539537
anti-HRH3 antibody (Internal Region)[Go to Product page](#)

2 Images

Overview

| | |
|----------------------|----------------------------------------------------------|
| Quantity: | 100 µg |
| Target: | HRH3 |
| Binding Specificity: | Internal Region |
| Reactivity: | Human |
| Host: | Goat |
| Clonality: | Polyclonal |
| Conjugate: | This HRH3 antibody is un-conjugated |
| Application: | Western Blotting (WB), ELISA, Immunohistochemistry (IHC) |

Product Details

| | |
|-------------------|---------------------------------------------------------------------------------------------------------------------------------------|
| Purpose: | histamine H3 receptor |
| Sequence: | SVTRAVSYRA QQGDT |
| Isotype: | IgG |
| Cross-Reactivity: | Cow, Dog, Human, Mouse, Rat |
| Purification: | Purified from goat serum by ammonium sulphate precipitation followed by antigen affinity chromatography using the immunizing peptide. |
| Grade: | Verified |

Target Details

| | |
|---------|------|
| Target: | HRH3 |
|---------|------|

Target Details

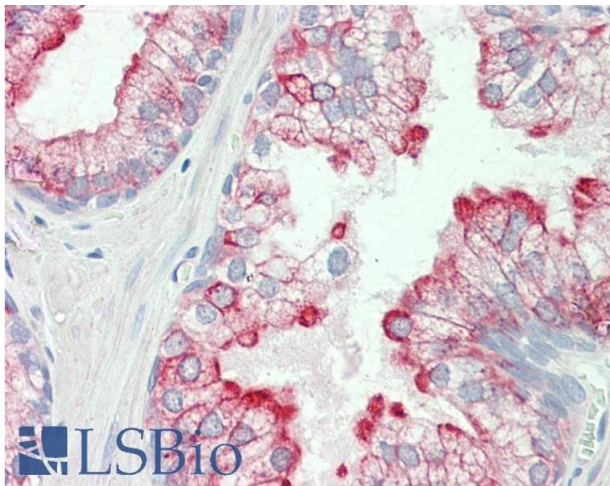
| | |
|-------------------|---------------------------------------------------------------------------------------------------------------------------------------------------------|
| Alternative Name: | HRH3 (HRH3 Products) |
| Background: | HRH3, histamine receptor H3, GPCR97, HH3R, G protein-coupled receptor 97, G-protein coupled receptor 97, H3R, OTTHUMP00000031459, histamine H3 receptor |
| Gene ID: | 11255, 99296, 85268 |
| NCBI Accession: | NP_009163 |
| Pathways: | cAMP Metabolic Process , Feeding Behaviour |

Application Details

| | |
|--------------------|----------------------------------------------------------------------------------------------------------------------------------------------------------------------------------------------------------------------------------------------------------------------------------------------------------------------------------------------------------------------------|
| Application Notes: | Immunohistochemistry: Paraffin embedded Human Prostate. Recommended concentration: 5 µg/mL. Western Blot: Approx 48 kDa band observed in lysates of cell line A549 (calculated MW of 48.7 kDa according to NP_009163.2). Recommended concentration: 0.1-0.3 µg/mL. Primary incubation was 1 hour. Peptide ELISA: antibody detection limit dilution 1:128000. |
| Restrictions: | For Research Use only |

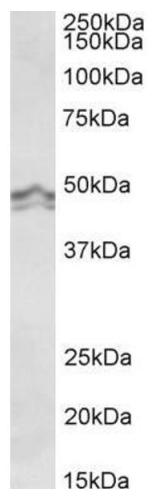
Handling

| | |
|--------------------|------------------------------------------------------------------------------------------------------------------------------------------------|
| Format: | Liquid |
| Concentration: | 0.5 mg/mL |
| Buffer: | Supplied at 0.5 mg/mL in Tris saline, 0.02 % sodium azide, pH 7.3 with 0.5 % bovine serum albumin. |
| Preservative: | Sodium azide |
| Precaution of Use: | This product contains Sodium azide: a POISONOUS AND HAZARDOUS SUBSTANCE which should be handled by trained staff only. |
| Handling Advice: | Minimize freezing and thawing. |
| Storage: | -20 °C |
| Storage Comment: | Aliquot and store at -20°C, with minimal freeze/thawing. A working aliquot may be refrigerated at 4°C for a few weeks and still remain viable. |



Immunohistochemistry

Image 1. ABIN5539537 (5µg/ml) staining of paraffin embedded Human Prostate. Steamed antigen retrieval with citrate buffer pH 6, AP-staining.



Western Blotting

Image 2. ABIN5539537 (0.1µg/ml) staining of A549 lysate (35µg protein in RIPA buffer). Detected by chemiluminescence.