



[Go to Product page](#)

Datasheet for ABIN5539538  
**anti-HSPD1 antibody (AA 333-344)**

5 Images

Overview

|                      |   |
|----------------------|---|
| Quantity:            | 100 µg  |
| Target:              | HSPD1   |
| Binding Specificity: | AA 333-344  |
| Reactivity:          | Human, Rat, Pig   |
| Host:                | Goat  |
| Clonality:           | Polyclonal  |
| Conjugate:           | This HSPD1 antibody is un-conjugated  |
| Application:         | Western Blotting (WB), Immunohistochemistry (IHC), Immunofluorescence (IF), ELISA |

Product Details

|                   |   |
|-------------------|---|
| Purpose:          | HSP60 / HSPD1 (aa333-344)   |
| Sequence:         | NLEDVQPHDL GK   |
| Isotype:          | IgG   |
| Specificity:      | Reported variants represent identical protein: NP_955472.1, NP_002147.2.  |
| Cross-Reactivity: | Cow, Dog, Human, Pig  |
| Purification:     | Purified from goat serum by ammonium sulphate precipitation followed by antigen affinity chromatography using the immunizing peptide. |
| Grade:            | Verified  |

## Target Details

---

|                   |   |
|-------------------|---|
| Target:           | HSPD1   |
| Alternative Name: | HSPD1 ( <a href="#">HSPD1 Products</a> )  |
| Background:       | HSPD1, heat shock 60 kDa protein 1 (chaperonin), CPN60, GROEL, HLD4, HSP-60, HSP60, HSP65, HuCHA60, SPG13, 60 kDa chaperonin, 60 kDa heat shock protein, mitochondrial, P60 lymphocyte protein, chaperonin 60, heat shock protein 65, mitochondrial matrix prote  |
| Gene ID:          | 3329  |
| NCBI Accession:   | <a href="#">NP_002147</a>   |
| Pathways:         | <a href="#">Activation of Innate immune Response</a> , <a href="#">Regulation of Leukocyte Mediated Immunity</a> , <a href="#">Positive Regulation of Immune Effector Process</a> , <a href="#">Production of Molecular Mediator of Immune Response</a> , <a href="#">Positive Regulation of Endopeptidase Activity</a> |

## Application Details

---

|                    |   |
|--------------------|---|
| Application Notes: | Immunohistochemistry: Paraffin embedded Human Kidney. Recommended concentration: 5 µg/mL.<br>Western Blot: Approx 60 kDa band observed in Human and Pig Heart, Kidney and Liver and in Rat Kidney lysates (calculated MW of 61.1 kDa according to Human NP_002147.2 and 60.9 kDa according to Pig NP_001241645.1 and Rat NP_071565.2 ). Recommended concentrat<br>Peptide ELISA: antibody detection limit dilution 1:64000. |
| Comment:           | <b>Immunofluorescence:</b> Strong expression of the protein seen in the mitochondria of HeLa cells and in the cytoplasm of A431 cells. Recommended concentration: 10µg/ml.  |
| Restrictions:      | For Research Use only   |

## Handling

---

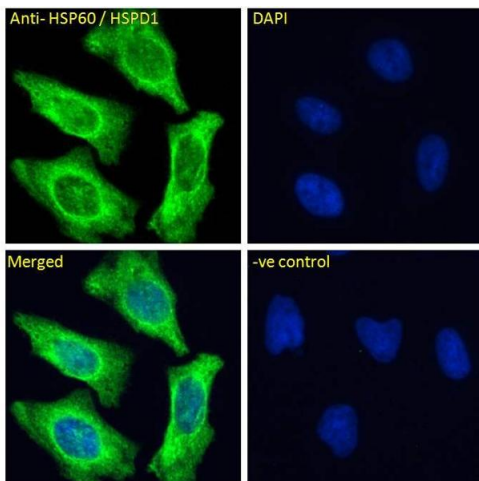
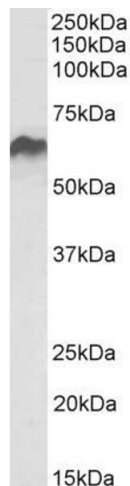
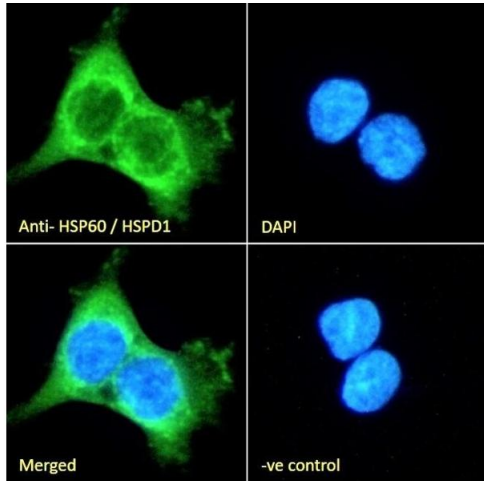
|                    |  |
|--------------------|--|
| Format:            | Liquid   |
| Concentration:     | 0.5 mg/mL  |
| Buffer:            | Supplied at 0.5 mg/mL in Tris saline, 0.02 % sodium azide, pH 7.3 with 0.5 % bovine serum albumin.                     |
| Preservative:      | Sodium azide   |
| Precaution of Use: | This product contains Sodium azide: a POISONOUS AND HAZARDOUS SUBSTANCE which should be handled by trained staff only. |
| Handling Advice:   | Minimize freezing and thawing.   |

## Handling

Storage: -20 °C

Storage Comment: Aliquot and store at -20°C, with minimal freeze/thawing. A working aliquot may be refrigerated at 4°C for a few weeks and still remain viable.

## Images



### Immunofluorescence

**Image 1.** (ABIN5539538) Immunofluorescence analysis of paraformaldehyde fixed A431 cells, permeabilized with 0.15 % Triton. Primary incubation 1hr (10 µg/mL) followed by Alexa Fluor 488 secondary antibody (2 µg/mL), showing cytoplasmic staining. The nuclear stain is DAPI (blue). Negative control: Unimmunized goat IgG (10 µg/mL) followed by Alexa Fluor 488 secondary antibody (2 µg/mL).

### Western Blotting

**Image 2.** ABIN5539538 (0.1µg/ml) staining of Rat Kidney lysate (35µg protein in RIPA buffer). Detected by chemiluminescence.

### Immunofluorescence

**Image 3.** ABIN5539538 Immunofluorescence analysis of paraformaldehyde fixed HeLa cells, permeabilized with 0.15% Triton. Primary incubation 1hr (10ug/ml) followed by Alexa Fluor 488 secondary antibody (4ug/ml), showing Mitochondrial staining. The nuclear stain is DAPI

Please check the [product details page](#) for more images. Overall 5 images are available for ABIN5539538.