



Datasheet for ABIN5539540
anti-HDAC6 antibody (C-Term)



[Go to Product page](#)

4 Images

Overview

Quantity:	100 µg
Target:	HDAC6
Binding Specificity:	C-Term
Reactivity:	Human
Host:	Goat
Clonality:	Polyclonal
Conjugate:	This HDAC6 antibody is un-conjugated
Application:	Immunohistochemistry (IHC), ELISA, Immunofluorescence (IF), Flow Cytometry (FACS)

Product Details

Purpose:	HDAC6
Sequence:	AHQNKFGEDM PHPH
Isotype:	IgG
Cross-Reactivity:	Cow, Dog, Human, Mouse, Rat
Purification:	Purified from goat serum by ammonium sulphate precipitation followed by antigen affinity chromatography using the immunizing peptide.
Grade:	Verified

Target Details

Target:	HDAC6
---------	-------

Target Details

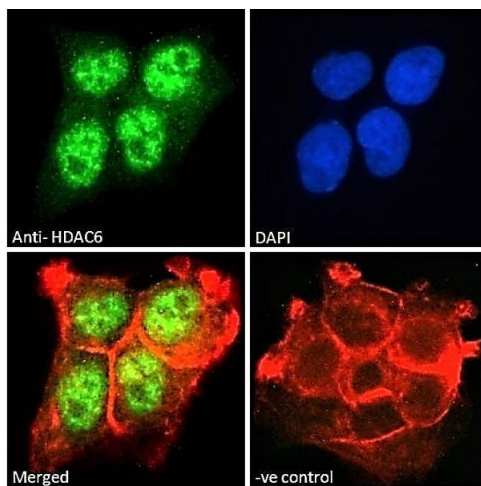
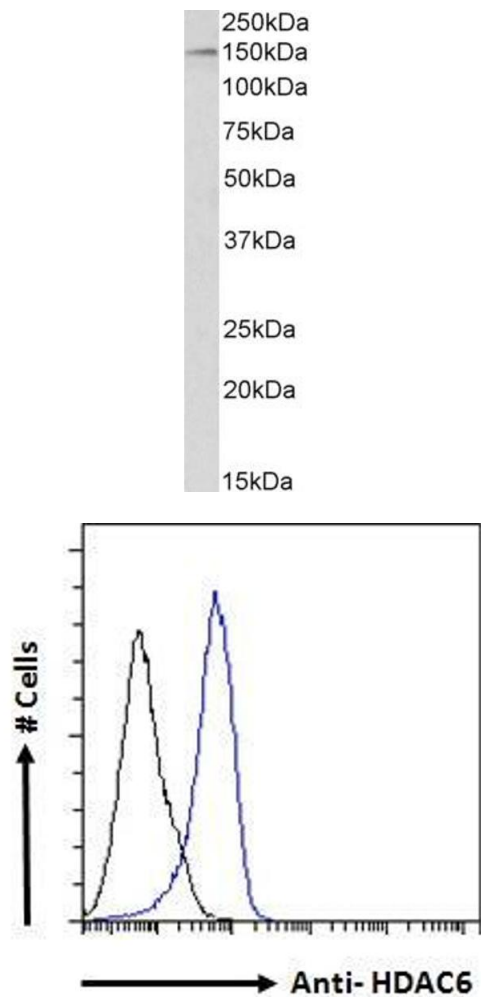
Alternative Name:	HDAC6 (HDAC6 Products)
Background:	HDAC6, histone deacetylase 6, HD6, JM21, KIAA0901
Gene ID:	10013
NCBI Accession:	NP_006035 , NP_001308154
Pathways:	Intracellular Steroid Hormone Receptor Signaling Pathway , Regulation of Intracellular Steroid Hormone Receptor Signaling

Application Details

Application Notes:	Immunohistochemistry: Paraffin embedded Human Kidney. Recommended concentration: 5 µg/mL. Peptide ELISA: antibody detection limit dilution 1:32000.
Comment:	Immunofluorescence: Strong expression of the protein seen in the nuclei of A431 and HeLa cells. Recommended concentration: 10µg/ml. Flow Cytometry: Flow cytometric analysis of A431 cells. Recommended concentration: 10u
Restrictions:	For Research Use only

Handling

Format:	Liquid
Concentration:	0.5 mg/mL
Buffer:	Supplied at 0.5 mg/mL in Tris saline, 0.02 % sodium azide, pH 7.3 with 0.5 % bovine serum albumin.
Preservative:	Sodium azide
Precaution of Use:	This product contains Sodium azide: a POISONOUS AND HAZARDOUS SUBSTANCE which should be handled by trained staff only.
Handling Advice:	Minimize freezing and thawing.
Storage:	-20 °C
Storage Comment:	Aliquot and store at -20°C, with minimal freeze/thawing. A working aliquot may be refrigerated at 4°C for a few weeks and still remain viable.



Western Blotting

Image 1. ABIN5539540 (1 μ g/ml) staining of HeLa nuclear lysate (35 μ g protein in RIPA buffer). Detected by chemiluminescence.

Flow Cytometry

Image 2. ABIN5539540 Flow cytometric analysis of paraformaldehyde fixed A431 cells (blue line), permeabilized with 0.5% Triton. Primary incubation 1hr (10 μ g/ml) followed by Alexa Fluor 488 secondary antibody (1 μ g/ml). IgG control: Unimmunized goat IgG (black line) followed by Alexa Fluor 488 secondary antibody.

Immunofluorescence

Image 3. ABIN5539540 Immunofluorescence analysis of paraformaldehyde fixed A431 cells, permeabilized with 0.15% Triton. Primary incubation 1hr (10 μ g/ml) followed by Alexa Fluor 488 secondary antibody (2 μ g/ml), showing nuclear staining. Actin filaments were stained with phalloidin (red) and the nuclear stain is DAPI (blue). Negative control: Unimmunized goat IgG (10 μ g/ml) followed by Alexa Fluor 488 secondary antibody (2 μ g/ml).

Please check the [product details page](#) for more images. Overall 4 images are available for ABIN5539540.