

Datasheet for ABIN5539546
anti-Kallikrein 6 antibody (Internal Region)[Go to Product page](#)

2 Images

Overview

Quantity:	100 µg
Target:	Kallikrein 6 (KLK6)
Binding Specificity:	Internal Region
Reactivity:	Human
Host:	Goat
Clonality:	Polyclonal
Conjugate:	This Kallikrein 6 antibody is un-conjugated
Application:	Immunohistochemistry (IHC), ELISA, Flow Cytometry (FACS), Immunofluorescence (IF)

Product Details

Purpose:	kallikrein 6
Sequence:	KTADGDFPDT IQ
Isotype:	IgG
Specificity:	This antibody is expected to recognize both reported isoforms (NP_002765.1, NP_001012983.1). Reported variants represent identical protein: NP_002765.1, NP_001012982.1.
Cross-Reactivity:	Human
Purification:	Purified from goat serum by ammonium sulphate precipitation followed by antigen affinity chromatography using the immunizing peptide.
Grade:	Verified

Target Details

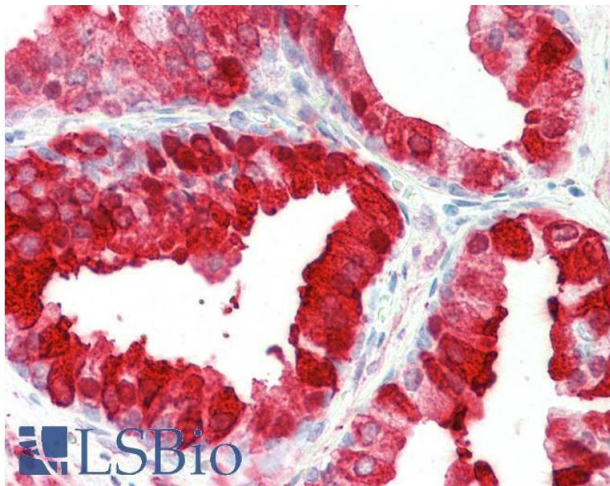
Target:	Kallikrein 6 (KLK6)
Alternative Name:	KLK6 (KLK6 Products)
Background:	KLK6, kallikrein-related peptidase 6, Bssp, Klk7, PRSS18, PRSS9, SP59, hK6, kallikrein-6, neurosin, protease M, serine protease 18, serine protease 9, zyme
Gene ID:	5653
NCBI Accession:	NP_002765 , NP_001012983
Pathways:	Complement System , Regulation of G-Protein Coupled Receptor Protein Signaling

Application Details

Application Notes:	Immunohistochemistry: Paraffin embedded Human Prostate and Kidney. Recommended concentration: 5 µg/mL. Peptide ELISA: antibody detection limit dilution 1:128000.
Comment:	Immunofluorescence: Strong expression of the protein seen in A431 and U2OS cells. Recommended concentration: 10µg/ml. Flow Cytometry: Flow cytometric analysis of A431 cells. Recommended concentration: 10ug/ml.
Restrictions:	For Research Use only

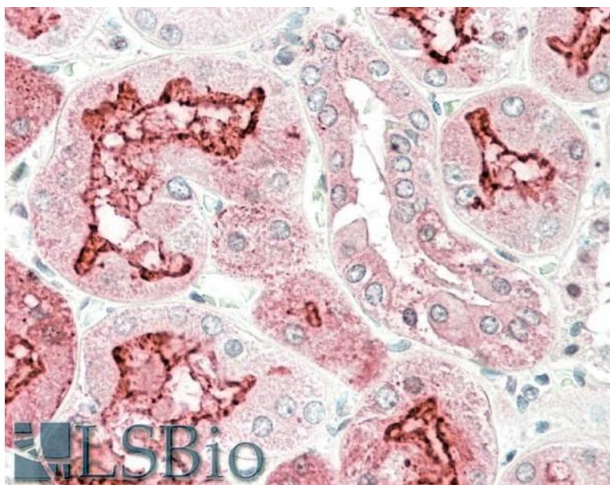
Handling

Format:	Liquid
Concentration:	0.5 mg/mL
Buffer:	Supplied at 0.5 mg/mL in Tris saline, 0.02 % sodium azide, pH 7.3 with 0.5 % bovine serum albumin.
Preservative:	Sodium azide
Precaution of Use:	This product contains Sodium azide: a POISONOUS AND HAZARDOUS SUBSTANCE which should be handled by trained staff only.
Handling Advice:	Minimize freezing and thawing.
Storage:	-20 °C
Storage Comment:	Aliquot and store at -20°C, with minimal freeze/thawing. A working aliquot may be refrigerated at 4°C for a few weeks and still remain viable.



Immunohistochemistry

Image 1. ABIN5539546 (5µg/ml) staining of paraffin embedded Human Prostate. Steamed antigen retrieval with citrate buffer pH 6, AP-staining.



Immunohistochemistry

Image 2. ABIN5539546 (5µg/ml) staining of paraffin embedded Human Kidney. Steamed antigen retrieval with citrate buffer pH 6, AP-staining.