

Datasheet for ABIN5539547

anti-Ketohexokinase antibody (Internal Region)**2** Images[Go to Product page](#)

Overview

Quantity:	100 µg
Target:	Ketohexokinase (KHK)
Binding Specificity:	Internal Region
Reactivity:	Human, Mouse, Rat, Pig
Host:	Goat
Clonality:	Polyclonal
Conjugate:	This Ketohexokinase antibody is un-conjugated
Application:	Western Blotting (WB), ELISA, Immunohistochemistry (IHC)

Product Details

Purpose:	Ketohexokinase
Sequence:	RCLSQRWQRG GNASN
Isotype:	IgG
Specificity:	This antibody is expected to recognize both reported isoforms (NP_000212.1, NP_006479.1).
Cross-Reactivity:	Cow, Dog, Human, Mouse, Pig, Rat
Purification:	Purified from goat serum by ammonium sulphate precipitation followed by antigen affinity chromatography using the immunizing peptide.
Grade:	Verified

Target Details

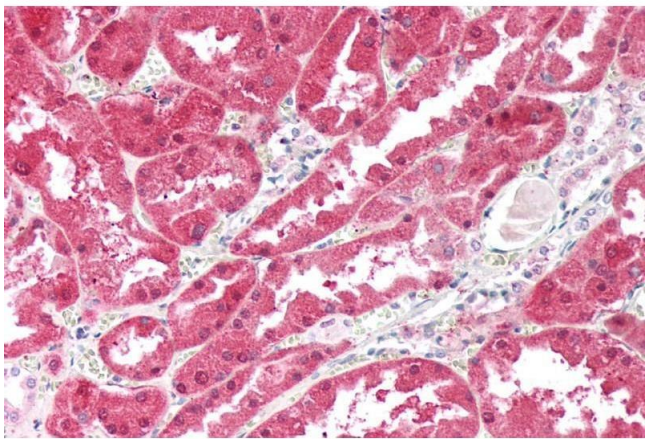
Target:	Ketohexokinase (KHK)
Alternative Name:	KHK (KHK Products)
Background:	KHK, ketohexokinase (fructokinase), hepatic fructokinase, ketohexokinase
Gene ID:	3795, 16548, 25659
NCBI Accession:	NP_000212 , NP_006479

Application Details

Application Notes:	Immunohistochemistry: Paraffin embedded Human Kidney. Recommended concentration: 5 µg/mL. Western Blot: Approx 30 kDa band observed in Human, Mouse, Rat and Pig Liver lysates (calculated MW of 32.7 kDa according to Human NP_000212.1, Mouse NP_032465.2, Rat NP_114061.1 and of 32.6 kDa according to Pig XP_003125348.1). Recommended concentration: 0 Peptide ELISA: antibody detection limit dilution 1:128000.
Restrictions:	For Research Use only

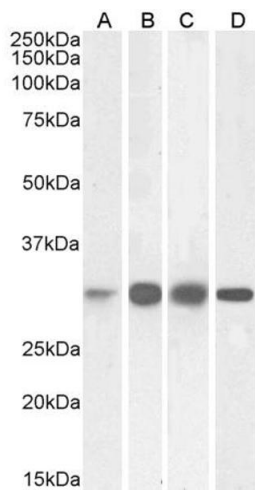
Handling

Format:	Liquid
Concentration:	0.5 mg/mL
Buffer:	Supplied at 0.5 mg/mL in Tris saline, 0.02 % sodium azide, pH 7.3 with 0.5 % bovine serum albumin.
Preservative:	Sodium azide
Precaution of Use:	This product contains Sodium azide: a POISONOUS AND HAZARDOUS SUBSTANCE which should be handled by trained staff only.
Handling Advice:	Minimize freezing and thawing.
Storage:	-20 °C
Storage Comment:	Aliquot and store at -20°C, with minimal freeze/thawing. A working aliquot may be refrigerated at 4°C for a few weeks and still remain viable.



Immunohistochemistry

Image 1. ABIN5539547 (5µg/ml) staining of paraffin embedded Human Kidney. Steamed antigen retrieval with citrate buffer pH 6, AP-staining.



Western Blotting

Image 2. ABIN5539547 (0.03µg/ml) staining of Human (A), Mouse (B), Rat (C) and Pig (D) Liver lysates (35µg protein in RIPA buffer). Detected by chemiluminescence.