

Datasheet for ABIN5539548  
**anti-LDHB antibody (Internal Region)**

## 2 Images

[Go to Product page](#)

## Overview

Quantity:	100 µg
Target:	LDHB
Binding Specificity:	Internal Region
Reactivity:	Human, Rat, Mouse, Pig
Host:	Goat
Clonality:	Polyclonal
Conjugate:	This LDHB antibody is un-conjugated
Application:	Western Blotting (WB), ELISA

## Product Details

Purpose:	LDHB
Sequence:	NARGLTSVIN QKLK
Isotype:	IgG
Specificity:	Reported variants represent identical protein: NP_002291.1, NP_001167568.1.
Cross-Reactivity:	Cow, Dog, Human, Mouse, Pig, Rat
Purification:	Purified from goat serum by ammonium sulphate precipitation followed by antigen affinity chromatography using the immunizing peptide.
Grade:	Verified

## Target Details

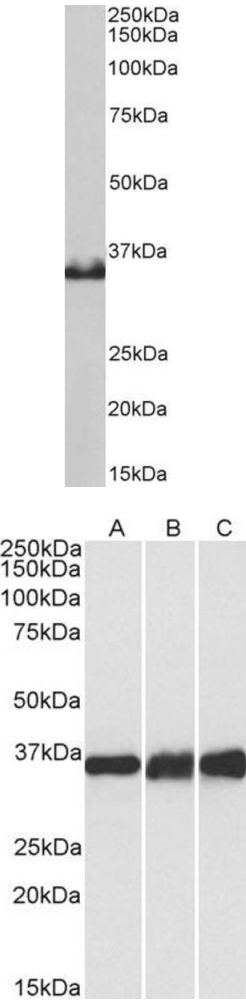
Target:	LDHB
Alternative Name:	LDHB ( <a href="#">LDHB Products</a> )
Background:	LDHB, lactate dehydrogenase B, LDH-B, LDH-H, LDHBD, TRG-5, L-lactate dehydrogenase B chain, LDH heart subunit, lactate dehydrogenase H chain, renal carcinoma antigen NY-REN-46
Gene ID:	3945, 16832, 24534
NCBI Accession:	<a href="#">NP_002291</a>
Pathways:	<a href="#">Warburg Effect</a>

## Application Details

Application Notes:	Western Blot: Approx 35 kDa band observed in Human, Mouse, Rat and Pig Heart lysates (calculated MW of 36.6 kDa according to NP_002291.1). Recommended concentration: 0.03-0.1 µg/mL. Peptide ELISA: antibody detection limit dilution 1:16000.
Comment:	<b>Additional validation:</b> This antibody has been successfully used in the following paper: Sikorski et al. (2018) PMID: 30377371.
Restrictions:	For Research Use only

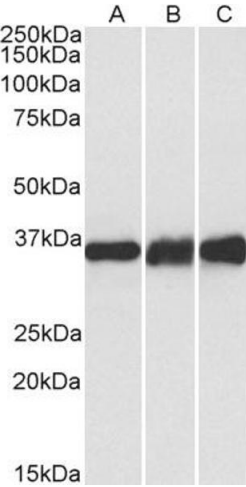
## Handling

Format:	Liquid
Concentration:	0.5 mg/mL
Buffer:	Supplied at 0.5 mg/mL in Tris saline, 0.02 % sodium azide, pH 7.3 with 0.5 % bovine serum albumin.
Preservative:	Sodium azide
Precaution of Use:	This product contains Sodium azide: a POISONOUS AND HAZARDOUS SUBSTANCE which should be handled by trained staff only.
Handling Advice:	Minimize freezing and thawing.
Storage:	-20 °C
Storage Comment:	Aliquot and store at -20°C, with minimal freeze/thawing. A working aliquot may be refrigerated at 4°C for a few weeks and still remain viable.



**Western Blotting**

**Image 1.** ABIN5539548 (0.1µg/ml) staining of Pig Heart lysates (35µg protein in RIPA buffer). Primary incubation was 1 hour. Detected by chemiluminescence.



**Western Blotting**

**Image 2.** ABIN5539548 (0.1µg/ml) staining of Human (A), Mouse (B) and Rat (C) Heart lysates (35µg protein in RIPA buffer). Primary incubation was 1 hour. Detected by chemiluminescence.