

Datasheet for ABIN5539553
anti-Latexin antibody (C-Term) (Biotin)[Go to Product page](#)

1 Image

Overview

Quantity:	100 µg
Target:	Latexin (LXN)
Binding Specificity:	C-Term
Reactivity:	Human, Mouse, Rat, Dog
Host:	Goat
Clonality:	Polyclonal
Conjugate:	This Latexin antibody is conjugated to Biotin
Application:	Western Blotting (WB), ELISA, Immunohistochemistry (IHC), Immunofluorescence (IF)

Product Details

Purpose:	Latexin, Biotinylated
Sequence:	QYGTKVKHNS RLPKE.
Isotype:	IgG
Cross-Reactivity:	Dog, Human, Mouse, Rat
Purification:	Purified from goat serum by ammonium sulphate precipitation followed by antigen affinity chromatography using the immunizing peptide.
Grade:	Verified

Target Details

Target:	Latexin (LXN)
---------	---------------

Target Details

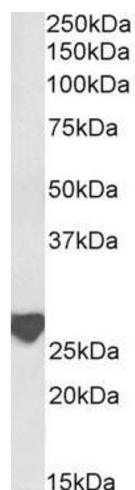
Alternative Name:	LXN (LXN Products)
Background:	LXN, latexin, ECI, TCI, MUM, endogenous carboxypeptidase inhibitor, tissue carboxypeptidase inhibitor
Gene ID:	56925, 17035, 59073
NCBI Accession:	NP_064554

Application Details

Application Notes:	Western Blot: Approx 28 kDa band observed in Rat Brain lysates (calculated MW of 25.6 kDa according to Rat NP_113843.1). See non-biotinylated parental product's datasheet for further QC data. Recommended concentration: 0.1-0.3 µg/mL. Peptide ELISA: antibody detection limit dilution 1:128000.
Restrictions:	For Research Use only

Handling

Format:	Liquid
Concentration:	0.5 mg/mL
Buffer:	Supplied at 0.5 mg/mL in Tris saline, 0.02 % sodium azide, pH 7.3 with 0.5 % bovine serum albumin.
Preservative:	Sodium azide
Precaution of Use:	This product contains Sodium azide: a POISONOUS AND HAZARDOUS SUBSTANCE which should be handled by trained staff only.
Handling Advice:	Minimize freezing and thawing.
Storage:	-20 °C
Storage Comment:	Aliquot and store at -20°C, with minimal freeze/thawing. A working aliquot may be refrigerated at 4°C for a few weeks and still remain viable.



Western Blotting

Image 1. Biotinylated ABIN5539553 (0.3µg/ml) staining of Rat Brain lysate (35µg protein in RIPA buffer), exactly mirroring its parental non-biotinylated product. Primary incubation was 1 hour. Detected by chemiluminescence, using streptavidin-HRP and using NAP blocker as a substitute for skimmed milk.