

Datasheet for ABIN5539580
anti-RPS6KA2 antibody (C-Term)

2 Images

[Go to Product page](#)

Overview

Quantity:	100 µg
Target:	RPS6KA2
Binding Specificity:	C-Term
Reactivity:	Rat
Host:	Goat
Clonality:	Polyclonal
Conjugate:	This RPS6KA2 antibody is un-conjugated
Application:	ELISA, Western Blotting (WB)

Product Details

Purpose:	RPS6KA2
Sequence:	EYLSPNQLSR QDVH
Isotype:	IgG
Specificity:	This antibody is expected to recognize both reported isoforms (NP_066958.2, NP_001006933.1)
Cross-Reactivity:	Horse, Human, Mouse, Rat
Purification:	Purified from goat serum by ammonium sulphate precipitation followed by antigen affinity chromatography using the immunizing peptide.
Grade:	Verified

Target Details

Target:	RPS6KA2
Alternative Name:	RPS6KA2 (RPS6KA2 Products)
Background:	RPS6KA2, ribosomal protein S6 kinase, 90 kDa, polypeptide 2, HU-2, MAPKAPK1C, RSK, RSK3, S6K-alpha, S6K-alpha2, p90-RSK3, pp90RSK3, ribosomal S6 kinase 3, ribosomal protein S6 kinase alpha 2, ribosomal protein S6 kinase, 90kD, polypeptide 2
Gene ID:	6196
NCBI Accession:	NP_066958 , NP_001006933
Pathways:	MAPK Signaling , Neurotrophin Signaling Pathway , Regulation of Systemic Arterial Blood Pressure by Hormones , Activation of Innate immune Response , Toll-Like Receptors Cascades

Application Details

Application Notes:	Western Blot: Approx 75 kDa band observed in Rat Lung lysates (calculated MW of 83.2 kDa according to Rat NP_476469.11). Recommended concentration: 0.01-0.03 µg/mL. Peptide ELISA: antibody detection limit dilution 1:64000.
Restrictions:	For Research Use only

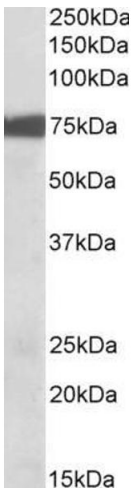
Handling

Format:	Liquid
Concentration:	0.5 mg/mL
Buffer:	Supplied at 0.5 mg/mL in Tris saline, 0.02 % sodium azide, pH 7.3 with 0.5 % bovine serum albumin.
Preservative:	Sodium azide
Precaution of Use:	This product contains Sodium azide: a POISONOUS AND HAZARDOUS SUBSTANCE which should be handled by trained staff only.
Handling Advice:	Minimize freezing and thawing.
Storage:	-20 °C
Storage Comment:	Aliquot and store at -20°C, with minimal freeze/thawing. A working aliquot may be refrigerated at 4°C for a few weeks and still remain viable.



Western Blotting

Image 1. ABIN5539580 (1µg/ml) staining of Rat Lung lysate (35µg protein in RIPA buffer). Primary incubation was 1 hour. Detected by chemiluminescence.



Western Blotting

Image 2. ABIN5539580 (0.01µg/ml) staining of Mouse Lung lysate (35µg protein in RIPA buffer). Primary incubation was 1 hour. Detected by chemiluminescence.