



[Go to Product page](#)

Datasheet for ABIN5539590

anti-SOCS1 antibody (C-Term) (Biotin)

1 Image

Overview

Quantity:	100 µg
Target:	SOCS1
Binding Specificity:	C-Term
Reactivity:	Human, Mouse
Host:	Goat
Clonality:	Polyclonal
Conjugate:	This SOCS1 antibody is conjugated to Biotin
Application:	Western Blotting (WB), ELISA

Product Details

Purpose:	SOCS1, biotinylated
Sequence:	VLRDYLSFP FQI.
Isotype:	IgG
Cross-Reactivity:	Cow, Dog, Human, Mouse, Rat
Purification:	Purified from goat serum by ammonium sulphate precipitation followed by antigen affinity chromatography using the immunizing peptide.
Grade:	Verified

Target Details

Target:	SOCS1
---------	-------

Target Details

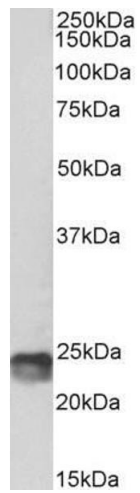
Alternative Name:	SOCS1 (SOCS1 Products)
Background:	SOCS1, suppressor of cytokine signaling 1, CIS1, CISH1, JAB, SOCS-1, SSI-1, SSI1, TIP3, JAK binding protein, JAK-binding protein, STAT induced SH3 protein 1, STAT-induced STAT inhibitor 1, TIP-3, Tec-interacting protein 3, cytokine-inducible SH2 protein 1
Gene ID:	8651, 12703
NCBI Accession:	NP_003736
Pathways:	JAK-STAT Signaling , Interferon-gamma Pathway , TLR Signaling , Response to Growth Hormone Stimulus

Application Details

Application Notes:	Western Blot: Approx 24 kDa band observed in Mouse Spleen lysates (calculated MW of 23.7 kDa according to Mouse NP_034026.1). See non-biotinylated parental product's datasheet for further QC data. Recommended concentration: 1-3 µg/mL. Peptide ELISA: antibody detection limit dilution 1:32000.
Restrictions:	For Research Use only

Handling

Format:	Liquid
Concentration:	0.5 mg/mL
Buffer:	Supplied at 0.5 mg/mL in Tris saline, 0.02 % sodium azide, pH 7.3 with 0.5 % bovine serum albumin.
Preservative:	Sodium azide
Precaution of Use:	This product contains Sodium azide: a POISONOUS AND HAZARDOUS SUBSTANCE which should be handled by trained staff only.
Handling Advice:	Minimize freezing and thawing.
Storage:	-20 °C
Storage Comment:	Aliquot and store at -20°C, with minimal freeze/thawing. A working aliquot may be refrigerated at 4°C for a few weeks and still remain viable.



Western Blotting

Image 1. Biotinylated ABIN5539590 (1 μ g/ml) staining of Mouse Spleen lysate (35 μ g protein in RIPA buffer). Primary incubation was 1 hour. Detected by chemiluminescence, using streptavidin-HRP and using NAP blocker as a substitute for skimmed milk.