

Datasheet for ABIN5539592  
**anti-UBASH3A antibody (AA 470-482)**[Go to Product page](#)

## 2 Images

## Overview

Quantity:	100 µg
Target:	UBASH3A
Binding Specificity:	AA 470-482
Reactivity:	Human
Host:	Goat
Clonality:	Polyclonal
Conjugate:	This UBASH3A antibody is un-conjugated
Application:	ELISA, Western Blotting (WB), Immunohistochemistry (IHC)

## Product Details

Purpose:	STS2 / TULA (aa470-482)
Sequence:	DSGIRISSVF ASP
Isotype:	IgG
Specificity:	This antibody is expected to recognize both reported isoforms (NP_061834.1, NP_001001895.1).
Cross-Reactivity:	Human
Purification:	Purified from goat serum by ammonium sulphate precipitation followed by antigen affinity chromatography using the immunizing peptide.
Grade:	Verified

## Target Details

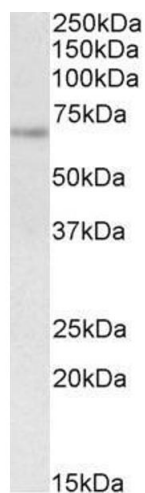
Target:	UBASH3A
Alternative Name:	UBASH3A ( <a href="#">UBASH3A Products</a> )
Background:	UBASH3A, ubiquitin associated and SH3 domain containing A, CLIP4, STS-2, TULA, OTTHUMP00000109368, T-cell ubiquitin ligand protein, cbl-interacting protein 4, suppressor of T-cell receptor signaling 2, ubiquitin-associated and SH3 domain-containing protei
Gene ID:	53347
NCBI Accession:	<a href="#">NP_061834</a> , <a href="#">NP_001001895</a>

## Application Details

Application Notes:	<p>Immunohistochemistry: In paraffin embedded Human Breast shows perinuclear staining in the epithelial cells of the tubules. Recommended concentration, 3-5 µg/mL.</p> <p>Western Blot: Approx 70 kDa band observed in Human Spleen lysates (calculated MW of 69.8 kDa according to NP_001001895.1). Recommended concentration: 1-3 µg/mL.</p> <p>Peptide ELISA: antibody detection limit dilution 1:8000.</p>
Restrictions:	For Research Use only

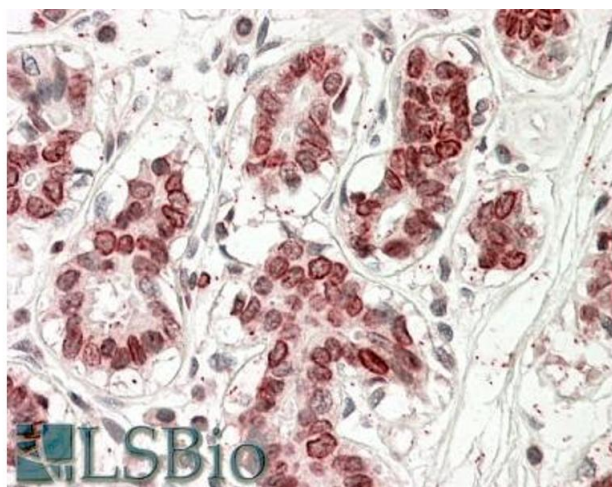
## Handling

Format:	Liquid
Concentration:	0.5 mg/mL
Buffer:	Supplied at 0.5 mg/mL in Tris saline, 0.02 % sodium azide, pH 7.3 with 0.5 % bovine serum albumin.
Preservative:	Sodium azide
Precaution of Use:	This product contains Sodium azide: a POISONOUS AND HAZARDOUS SUBSTANCE which should be handled by trained staff only.
Handling Advice:	Minimize freezing and thawing.
Storage:	-20 °C
Storage Comment:	Aliquot and store at -20°C, with minimal freeze/thawing. A working aliquot may be refrigerated at 4°C for a few weeks and still remain viable.



#### Western Blotting

**Image 1.** ABIN5539592 (1 $\mu$ g/ml) staining of Human Spleen lysate (35 $\mu$ g protein in RIPA buffer). Primary incubation was 1 hour. Detected by chemiluminescence.



#### Immunohistochemistry

**Image 2.** ABIN5539592 (3.8 $\mu$ g/ml) staining of paraffin embedded Human Breast. Steamed antigen retrieval with citrate buffer pH 6, AP-staining.