

Datasheet for ABIN5539607
anti-EEF1A2 antibody (Internal Region)[Go to Product page](#)

2 Images

Overview

Quantity:	100 µg
Target:	EEF1A2
Binding Specificity:	Internal Region
Reactivity:	Human, Mouse, Rat
Host:	Goat
Clonality:	Polyclonal
Conjugate:	This EEF1A2 antibody is un-conjugated
Application:	Western Blotting (WB), ELISA

Product Details

Purpose:	EEF1A2
Sequence:	NPATVPFVPI S
Isotype:	IgG
Cross-Reactivity:	Cow, Dog, Human, Mouse, Rat
Purification:	Purified from goat serum by ammonium sulphate precipitation followed by antigen affinity chromatography using the immunizing peptide.
Grade:	Verified

Target Details

Target:	EEF1A2
---------	--------

Target Details

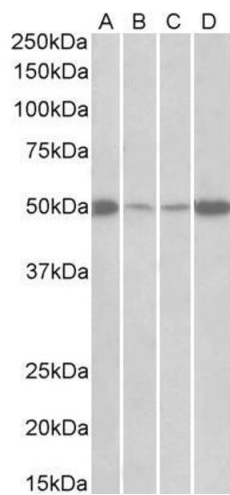
Alternative Name:	EEF1A2 (EEF1A2 Products)
Background:	EEF1A2, eukaryotic translation elongation factor 1 alpha 2, EEF1AL, EF-1-alpha-2, EF1A, FLJ41696, HS1, STN, STNL, OTTHUMP00000031776, eEF1A-2, elongation factor 1-alpha 2, elongation factor-1 alpha, eukaryotic elongation factor 1 A-2, statin S1, statin-S1
Gene ID:	1917, 13628, 24799
NCBI Accession:	NP_001949

Application Details

Application Notes:	Western Blot: Approx 50 kDa band observed in lysates of cell lines Daudi and Jurkat (calculated MW of 50.5 kDa according to NP_001949.1). The same band is observed in lysates of Mouse and Rat Heart and Skeletal Muscle. Recommended concentration: 0.5-2 µg/mL Peptide ELISA: antibody detection limit dilution 1:8000.
Restrictions:	For Research Use only

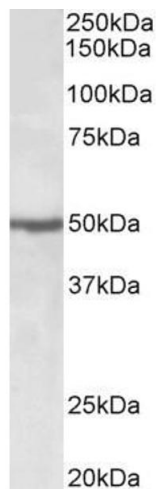
Handling

Format:	Liquid
Concentration:	0.5 mg/mL
Buffer:	Supplied at 0.5 mg/mL in Tris saline, 0.02 % sodium azide, pH 7.3 with 0.5 % bovine serum albumin.
Preservative:	Sodium azide
Precaution of Use:	This product contains Sodium azide: a POISONOUS AND HAZARDOUS SUBSTANCE which should be handled by trained staff only.
Handling Advice:	Minimize freezing and thawing.
Storage:	-20 °C
Storage Comment:	Aliquot and store at -20°C, with minimal freeze/thawing. A working aliquot may be refrigerated at 4°C for a few weeks and still remain viable.



Western Blotting

Image 1. ABIN5539607 (0.5µg/ml) staining of Mouse (A+C) and Rat (B+D) Skeletal Muscle (A+B) and Heart (C+D) lysates (35µg protein in RIPA buffer). Primary incubation was 1 hour. Detected by chemiluminescence.



Western Blotting

Image 2. ABIN5539607 (0.5µg/ml) staining of Jurkat lysate (35µg protein in RIPA buffer). Primary incubation was 1 hour. Detected by chemiluminescence.