

Datasheet for ABIN5539611
anti-CX3CL1 antibody (Internal Region) (Biotin)



[Go to Product page](#)

1 Image

Overview

| | |
|----------------------|--|
| Quantity: | 100 µg |
| Target: | CX3CL1 |
| Binding Specificity: | Internal Region |
| Reactivity: | Human |
| Host: | Goat |
| Clonality: | Polyclonal |
| Conjugate: | This CX3CL1 antibody is conjugated to Biotin |
| Application: | Western Blotting (WB), ELISA, Immunohistochemistry (IHC) |

Product Details

| | |
|-------------------|---|
| Purpose: | ABCD3, Biotinylated |
| Sequence: | PDGREDQKRK GISD. |
| Isotype: | IgG |
| Specificity: | This antibody is expected to recognize one isoform (NP_002849.1) only. |
| Cross-Reactivity: | Human, Mouse, Rat |
| Purification: | Purified from goat serum by ammonium sulphate precipitation followed by antigen affinity chromatography using the immunizing peptide. |
| Grade: | Verified |

Target Details

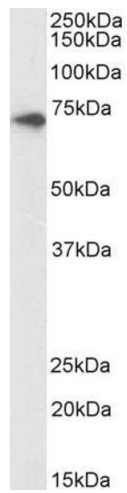
| | |
|-------------------|---|
| Target: | CX3CL1 |
| Alternative Name: | ABCD3 (CX3CL1 Products) |
| Background: | ABCD3, ATP binding cassette subfamily D member 3, ABC43, CBAS5, PMP70, PXMP1, ZWS2, 70 kDa peroxisomal membrane protein, ATP-binding cassette, sub-family D (ALD), member 3, Peroxisomal membrane protein-1 (70kD), dJ824018.1 (ATP-binding cassette, sub-famil |
| Gene ID: | 5825, 19299, 25270 |
| NCBI Accession: | NP_002849 |
| Pathways: | Synaptic Membrane |

Application Details

| | |
|--------------------|---|
| Application Notes: | Western Blot: Approx 70 kDa band observed in Human Kidney lysates (calculated MW of 75.5 kDa according to NP_002849.1). See non-biotinylated parental product's datasheet for further QC data. Recommended concentration: 1-3 µg/mL. Peptide ELISA: antibody detection limit dilution 1:16000. |
| Restrictions: | For Research Use only |

Handling

| | |
|--------------------|--|
| Format: | Liquid |
| Concentration: | 0.5 mg/mL |
| Buffer: | Supplied at 0.5 mg/mL in Tris saline, 0.02 % sodium azide, pH 7.3 with 0.5 % bovine serum albumin. |
| Preservative: | Sodium azide |
| Precaution of Use: | This product contains Sodium azide: a POISONOUS AND HAZARDOUS SUBSTANCE which should be handled by trained staff only. |
| Handling Advice: | Minimize freezing and thawing. |
| Storage: | -20 °C |
| Storage Comment: | Aliquot and store at -20°C, with minimal freeze/thawing. A working aliquot may be refrigerated at 4°C for a few weeks and still remain viable. |



Western Blotting

Image 1. Biotinylated ABIN5539611 (1 μ g/ml) staining of Human Kidney lysate (35 μ g protein in RIPA buffer), exactly mirroring its parental non-biotinylated product. Primary incubation was 1 hour. Detected by chemiluminescence, using streptavidin-HRP and using NAP blocker as a substitute for skimmed milk.