

Datasheet for ABIN5539612
anti-PTGES2 antibody (AA 292-306)[Go to Product page](#)

3 Images

Overview

Quantity:	100 µg
Target:	PTGES2
Binding Specificity:	AA 292-306
Reactivity:	Human
Host:	Goat
Clonality:	Polyclonal
Conjugate:	This PTGES2 antibody is un-conjugated
Application:	Western Blotting (WB), Immunohistochemistry (IHC), ELISA

Product Details

Purpose:	PTGES2 (aa292-306)
Sequence:	RLKSRHRLQD NVRED
Isotype:	IgG
Specificity:	This antibody is expected to recognize both reported isoforms (NP_079348.1, NP_945176.1). Reported variants represent identical protein: NP_001243264.1, NP_945176.1.
Cross-Reactivity:	Human
Purification:	Purified from goat serum by ammonium sulphate precipitation followed by antigen affinity chromatography using the immunizing peptide.
Grade:	Verified

Target Details

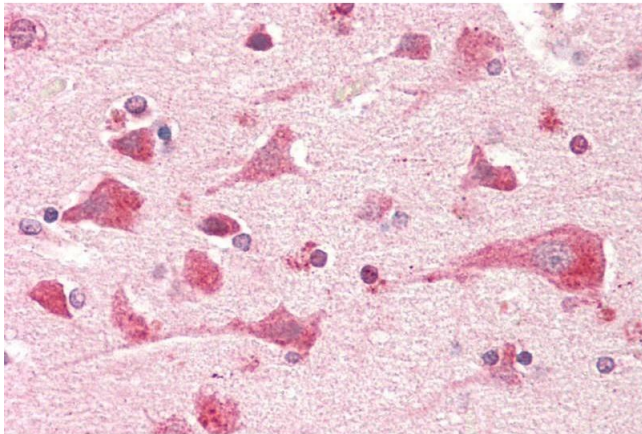
Target:	PTGES2
Alternative Name:	PTGES2 (PTGES2 Products)
Background:	PTGES2, prostaglandin E synthase 2, C9orf15, GBF-1, GBF1, PGES2, mPGES-2, GATE-binding factor 1, gamma-interferon-activated transcriptional element-binding factor 1, membrane-associated prostaglandin E synthase 2, microsomal prostaglandin E synthase-2
Gene ID:	80142
NCBI Accession:	NP_079348 , NP_945176
Pathways:	Interferon-gamma Pathway , Cell RedoxHomeostasis , SARS-CoV-2 Protein Interactome

Application Details

Application Notes:	Immunohistochemistry: Paraffin embedded Human Brain (Cortex) and Heart. Recommended concentration: 5 µg/mL. Western Blot: Approx 30 kDa band observed in lysates of cell line HeLa (calculated MW of 41.9 kDa according to NP_079348.1). This molecular weight is routinely observed by other sources. Recommended concentration: 1-3 µg/mL. Peptide ELISA: antibody detection limit dilution 1:128000.
Restrictions:	For Research Use only

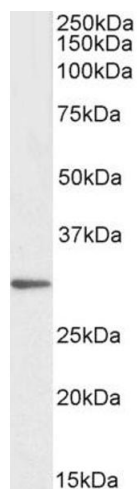
Handling

Format:	Liquid
Concentration:	0.5 mg/mL
Buffer:	Supplied at 0.5 mg/mL in Tris saline, 0.02 % sodium azide, pH 7.3 with 0.5 % bovine serum albumin.
Preservative:	Sodium azide
Precaution of Use:	This product contains Sodium azide: a POISONOUS AND HAZARDOUS SUBSTANCE which should be handled by trained staff only.
Handling Advice:	Minimize freezing and thawing.
Storage:	-20 °C
Storage Comment:	Aliquot and store at -20°C, with minimal freeze/thawing. A working aliquot may be refrigerated at 4°C for a few weeks and still remain viable.



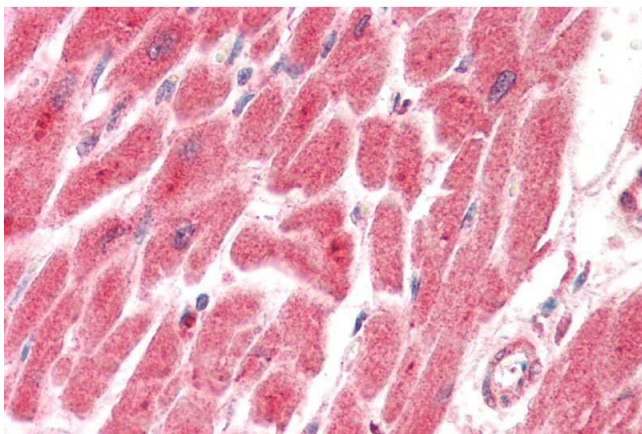
Immunohistochemistry

Image 1. ABIN5539612 (5µg/ml) staining of paraffin embedded Human Cortex. Steamed antigen retrieval with citrate buffer pH 6, AP-staining.



Western Blotting

Image 2. ABIN5539612 (1µg/ml) staining of HeLa lysate (35µg protein in RIPA buffer). Primary incubation was 1 hour. Detected by chemiluminescence.



Immunohistochemistry

Image 3. ABIN5539612 (5µg/ml) staining of paraffin embedded Human Heart. Steamed antigen retrieval with citrate buffer pH 6, AP-staining.