



Datasheet for ABIN5539613
anti-RPL23 antibody (C-Term)



[Go to Product page](#)

2 Images

Overview

Quantity:	100 µg
Target:	RPL23
Binding Specificity:	C-Term
Reactivity:	Human, Mouse
Host:	Goat
Clonality:	Polyclonal
Conjugate:	This RPL23 antibody is un-conjugated
Application:	Western Blotting (WB), Immunohistochemistry (IHC), ELISA

Product Details

Purpose:	RPL23
Sequence:	KECADLWPRI ASN
Isotype:	IgG
Cross-Reactivity:	Cow, Human, Mouse, Pig, Rat
Purification:	Purified from goat serum by ammonium sulphate precipitation followed by antigen affinity chromatography using the immunizing peptide.
Grade:	Verified

Target Details

Target:	RPL23
---------	-------

Target Details

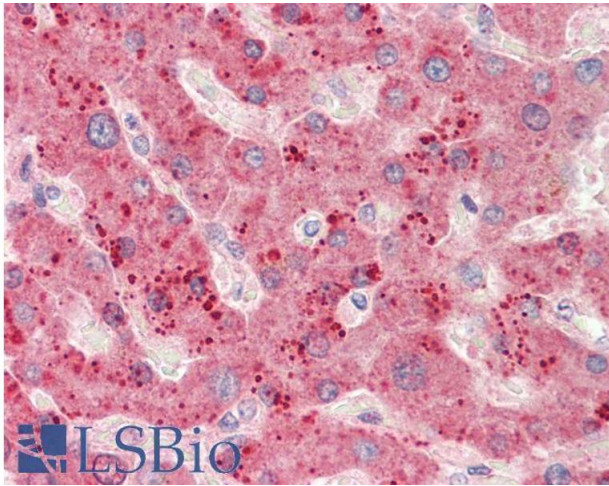
Alternative Name:	RPL23 (RPL23 Products)
Background:	RPL23, ribosomal protein L23, L23, MGC111167, MGC117346, MGC72008, rpL17, 60S ribosomal protein L17, 60S ribosomal protein L23, OTTHUMP00000164151, OTTHUMP00000164153, ribosomal protein L17
Gene ID:	9349, 65019, 29282
NCBI Accession:	NP_000969
Pathways:	Protein targeting to Nucleus

Application Details

Application Notes:	Immunohistochemistry: Paraffin embedded Human Tonsil and Liver. Recommended concentration: 5 µg/mL. Western Blot: Approx 16 kDa band observed in lysates of Human Colorectal Cancer and of cell lines NIH3T3 and HeLa (calculated MW of 14.9 kDa according to NP_000969.1). Recommended concentration: 0.1-0.3 µg/mL. Primary incubation was 1 hour. Peptide ELISA: antibody detection limit dilution 1:128000.
Restrictions:	For Research Use only

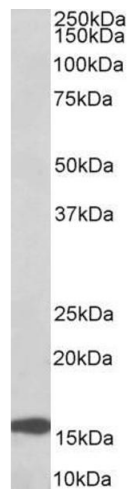
Handling

Format:	Liquid
Concentration:	0.5 mg/mL
Buffer:	Supplied at 0.5 mg/mL in Tris saline, 0.02 % sodium azide, pH 7.3 with 0.5 % bovine serum albumin.
Preservative:	Sodium azide
Precaution of Use:	This product contains Sodium azide: a POISONOUS AND HAZARDOUS SUBSTANCE which should be handled by trained staff only.
Handling Advice:	Minimize freezing and thawing.
Storage:	-20 °C
Storage Comment:	Aliquot and store at -20°C, with minimal freeze/thawing. A working aliquot may be refrigerated at 4°C for a few weeks and still remain viable.



Immunohistochemistry

Image 1. ABIN5539613 (5 μ g/ml) staining of paraffin embedded Human Liver. Steamed antigen retrieval with citrate buffer pH 6, AP-staining.



Western Blotting

Image 2. ABIN5539613 (0.1 μ g/ml) staining of Human Colorectal Cancer lysate (35 μ g protein in RIPA buffer). Detected by chemiluminescence.