

Datasheet for ABIN5539614
anti-SLC26A6 antibody (Internal Region)[Go to Product page](#)

2 Images

Overview

Quantity:	100 µg
Target:	SLC26A6
Binding Specificity:	Internal Region
Reactivity:	Human
Host:	Goat
Clonality:	Polyclonal
Conjugate:	This SLC26A6 antibody is un-conjugated
Application:	Western Blotting (WB), ELISA, Immunohistochemistry (IHC)

Product Details

Purpose:	SLC26A6
Sequence:	SAPRTHQWRT
Isotype:	IgG
Specificity:	This antibody is expected to recognize isoform 1, 2, 3 and 4 (NP_075062.2, NP_599025.2, NP_602298.2, NP_001035544.1). Please note that this antibody was shown unfit for Mouse tissues both in IHC and WB.
Cross-Reactivity:	Human
Purification:	Purified from goat serum by ammonium sulphate precipitation followed by antigen affinity chromatography using the immunizing peptide.
Grade:	Verified

Target Details

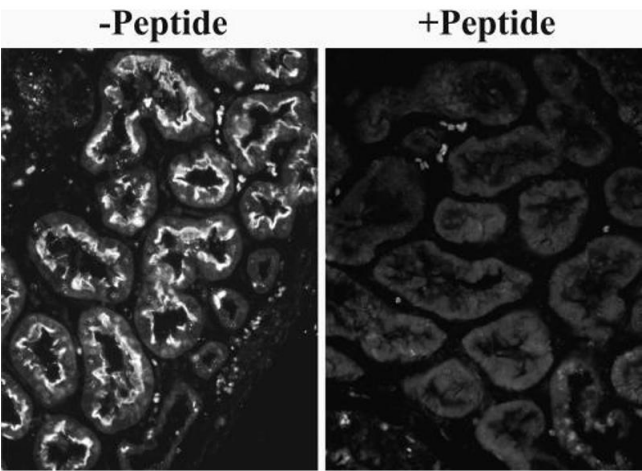
Target:	SLC26A6
Alternative Name:	SLC26A6 (SLC26A6 Products)
Background:	SLC26A6, solute carrier family 26, member 6, DKFZp586E1422, anion transporter 1, pendrin L1, pendrin-like protein 1, sulfate anion transporter
Gene ID:	65010, 171429
NCBI Accession:	NP_075062 , NP_599025 , NP_602298 , NP_001035544
Pathways:	Dicarboxylic Acid Transport

Application Details

Application Notes:	<p>Immunohistochemistry: In paraffin embedded Human Kidney showsstaining of brushborders along the entire proximal convoluted tubule. Recommended concentration, 0.1-0.3 mg/mL. Please note the unusually low dilution required for this type of application!</p> <p>Western Blot: Approx 90 kDa band observed in Human renal cortical brush-border membrane lysates (calculated MW of 83.0 kDa according to NP_075062.2). Recommended concentration: 10 µg/mL for overnight incubation.</p> <p>Peptide ELISA: antibody detection limit dilution 1:8000.</p>
Restrictions:	For Research Use only

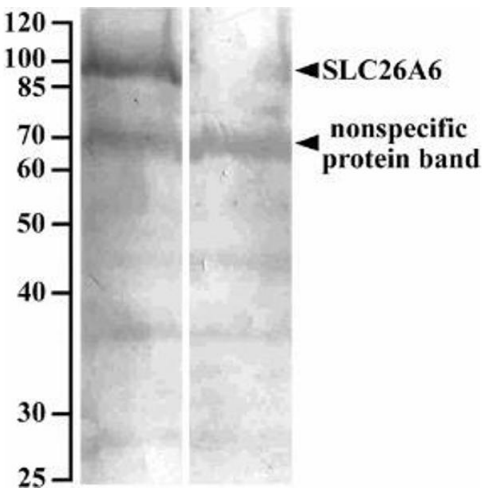
Handling

Format:	Liquid
Concentration:	0.5 mg/mL
Buffer:	Supplied at 0.5 mg/mL in Tris saline, 0.02 % sodium azide, pH 7.3 with 0.5 % bovine serum albumin.
Preservative:	Sodium azide
Precaution of Use:	This product contains Sodium azide: a POISONOUS AND HAZARDOUS SUBSTANCE which should be handled by trained staff only.
Handling Advice:	Minimize freezing and thawing.
Storage:	-20 °C
Storage Comment:	Aliquot and store at -20°C, with minimal freeze/thawing. A working aliquot may be refrigerated at 4°C for a few weeks and still remain viable.



Immunohistochemistry

Image 1. ABIN5539614 (0.1mg/ml) overnight staining of paraffin embedded Human Kidney. Microwaved antigen retrieval with citrate buffer pH 6, CY3-staining. Data kindly provided by Dean Karaica, B. Sc., and Ivan Sabolic, M.D., Ph.D., Institute for Medical Research



Western Blotting

Image 2. ABIN5539614 (10µg/ml) staining of Human renal cortical brush-border membrane lysate (90µg protein denatured at 37C for 30min) with (B) and without (A) blocking with the immunizing peptide. Primary incubation was overnight at 4C. Detected by NBT/BCIP.