



[Go to Product page](#)

Datasheet for ABIN5539618

anti-ANAPC11 antibody (Internal Region)

1 Image

Overview

Quantity:	100 µg
Target:	ANAPC11
Binding Specificity:	Internal Region
Reactivity:	Human
Host:	Goat
Clonality:	Polyclonal
Conjugate:	This ANAPC11 antibody is un-conjugated
Application:	Western Blotting (WB), ELISA

Product Details

Purpose:	ANAPC11
Sequence:	PALDQETSSL LRCTS
Isotype:	IgG
Specificity:	This antibody is expected to recognize. Reported variants represent identical protein: NP_057560.8, NP_001002248.1, NP_001002245.1, NP_001002246.1, NP_001002247.1, NP_001002249.1
Cross-Reactivity:	Human
Purification:	Purified from goat serum by ammonium sulphate precipitation followed by antigen affinity chromatography using the immunizing peptide.
Grade:	Verified

Target Details

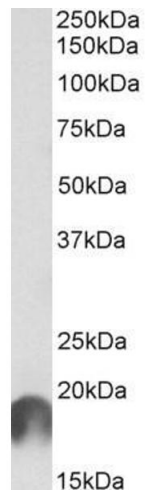
Target:	ANAPC11
Alternative Name:	ANAPC11 (ANAPC11 Products)
Background:	ANAPC11, anaphase promoting complex subunit 11, APC11, Apc11p, HSPC214, MGC882, APC11 anaphase promoting complex subunit 11, APC11 anaphase promoting complex subunit 11 homolog, anaphase promoting complex subunit 11 (yeast APC11 homolog)
Gene ID:	51529
NCBI Accession:	NP_001002244 , NP_057560

Application Details

Application Notes:	Western Blot: Approx 19 kDa band observed in Human Brain (Cerebral and Frontal Cortex, Hippocampus) lysates (calculated MW of 20.6 kDa according to NP_001002244.1). Recommended concentration: 0.3-1 µg/mL. Peptide ELISA: antibody detection limit dilution 1:32000.
Restrictions:	For Research Use only

Handling

Format:	Liquid
Concentration:	0.5 mg/mL
Buffer:	Supplied at 0.5 mg/mL in Tris saline, 0.02 % sodium azide, pH 7.3 with 0.5 % bovine serum albumin.
Preservative:	Sodium azide
Precaution of Use:	This product contains Sodium azide: a POISONOUS AND HAZARDOUS SUBSTANCE which should be handled by trained staff only.
Handling Advice:	Minimize freezing and thawing.
Storage:	-20 °C
Storage Comment:	Aliquot and store at -20°C, with minimal freeze/thawing. A working aliquot may be refrigerated at 4°C for a few weeks and still remain viable.



Western Blotting

Image 1. ABIN5539618 (1 μ g/ml) staining of Cerebral Cortex lysate (35 μ g protein in RIPA buffer). Primary incubation was 1 hour. Detected by chemiluminescence.