

Datasheet for ABIN5539620

anti-ADRA1B antibody (Internal Region)[Go to Product page](#)**1** Image

Overview

Quantity:	100 µg
Target:	ADRA1B
Binding Specificity:	Internal Region
Reactivity:	Human, Mouse, Rat, Pig
Host:	Goat
Clonality:	Polyclonal
Conjugate:	This ADRA1B antibody is un-conjugated
Application:	Western Blotting (WB), ELISA

Product Details

Purpose:	ADRA1B
Sequence:	SSTKAKGHNP RSS
Isotype:	IgG
Cross-Reactivity:	Cow, Dog, Human, Mouse, Pig, Rat
Purification:	Purified from goat serum by ammonium sulphate precipitation followed by antigen affinity chromatography using the immunizing peptide.
Grade:	Verified

Target Details

Target:	ADRA1B
---------	--------

Target Details

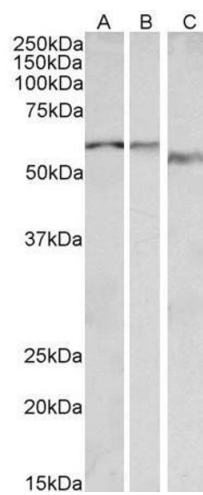
Alternative Name:	ADRA1B (ADRA1B Products)
Background:	ADRA1B, adrenergic, alpha-1B-, receptor, ADRA1, ALPHA1BAR, OTTHUMP00000160844, alpha-1B adrenergic receptor, alpha-1B adrenoceptor, alpha-1B adrenoreceptor, alpha-1B-adrenergic receptor
Gene ID:	147, 11548, 24173
NCBI Accession:	NP_000670
Pathways:	AMPK Signaling , Carbohydrate Homeostasis , Regulation of Carbohydrate Metabolic Process

Application Details

Application Notes:	Western Blot: Approx 55-60 kDa band observed in Human, Mouse, Rat and Pig Heart lysates (calculated MW of 56.8 kDa according to NP_000670.1). Recommended concentration: 0.1-0.3 µg/mL. Peptide ELISA: antibody detection limit dilution 1:128000.
Restrictions:	For Research Use only

Handling

Format:	Liquid
Concentration:	0.5 mg/mL
Buffer:	Supplied at 0.5 mg/mL in Tris saline, 0.02 % sodium azide, pH 7.3 with 0.5 % bovine serum albumin.
Preservative:	Sodium azide
Precaution of Use:	This product contains Sodium azide: a POISONOUS AND HAZARDOUS SUBSTANCE which should be handled by trained staff only.
Handling Advice:	Minimize freezing and thawing.
Storage:	-20 °C
Storage Comment:	Aliquot and store at -20°C, with minimal freeze/thawing. A working aliquot may be refrigerated at 4°C for a few weeks and still remain viable.



Western Blotting

Image 1. ABIN5539620 (0.1µg/ml) staining of Human Heart lysate (35µg protein in RIPA buffer). Primary incubation was 1 hour. Detected by chemiluminescence.