



[Go to Product page](#)

Datasheet for ABIN5539627

anti-DPF2 antibody (AA 89-103)

1 Image

Overview

Quantity:	100 µg
Target:	DPF2
Binding Specificity:	AA 89-103
Reactivity:	Human
Host:	Goat
Clonality:	Polyclonal
Conjugate:	This DPF2 antibody is un-conjugated
Application:	Western Blotting (WB), ELISA

Product Details

Purpose:	UBID4 (aa89-103)
Sequence:	EDPRLSFPSI KPDTD
Isotype:	IgG
Cross-Reactivity:	Cow, Dog, Human, Mouse, Pig, Rat
Purification:	Purified from goat serum by ammonium sulphate precipitation followed by antigen affinity chromatography using the immunizing peptide.
Grade:	Verified

Target Details

Target:	DPF2
---------	------

Target Details

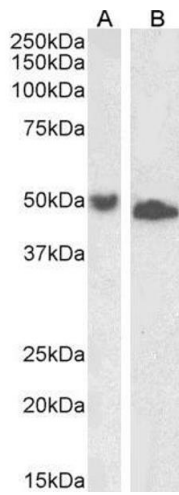
Alternative Name:	DPF2 (DPF2 Products)
Background:	DPF2, D4, zinc and double PHD fingers family 2, REQ, UBID4, ubi-d4, BAF45D, BRG1-associated factor 45D, apoptosis response zinc finger protein, protein requiem, requiem, apoptosis response zinc finger, zinc finger protein ubi-d4
Gene ID:	5977, 19708, 361711
NCBI Accession:	NP_006259

Application Details

Application Notes:	Western Blot: Approx 50 kDa and 48 kDa bands observed in lysates of cell lines Jurkat and K562 respectively (calculated MW of 44.2 kDa according to NP_006259.1). This molecular weight is routinely observed by other sources. Recommended concentration: 1-3 µg Peptide ELISA: antibody detection limit dilution 1:32000.
Restrictions:	For Research Use only

Handling

Format:	Liquid
Concentration:	0.5 mg/mL
Buffer:	Supplied at 0.5 mg/mL in Tris saline, 0.02 % sodium azide, pH 7.3 with 0.5 % bovine serum albumin.
Preservative:	Sodium azide
Precaution of Use:	This product contains Sodium azide: a POISONOUS AND HAZARDOUS SUBSTANCE which should be handled by trained staff only.
Handling Advice:	Minimize freezing and thawing.
Storage:	-20 °C
Storage Comment:	Aliquot and store at -20°C, with minimal freeze/thawing. A working aliquot may be refrigerated at 4°C for a few weeks and still remain viable.



Western Blotting

Image 1. ABIN5539627 (1µg/ml) staining of Jurkat (A) and K562 (B) lysate (35µg protein in RIPA buffer). Primary incubation was 1 hour. Detected by chemiluminescence.