

Datasheet for ABIN5539630

anti-Myotilin antibody (AA 209-221)



[Go to Product page](#)

1 Image

Overview

Quantity:	100 µg
Target:	Myotilin (MYOT)
Binding Specificity:	AA 209-221
Reactivity:	Human
Host:	Goat
Clonality:	Polyclonal
Conjugate:	This Myotilin antibody is un-conjugated
Application:	Western Blotting (WB), ELISA

Product Details

Purpose:	myotilin (aa209-221)
Sequence:	DSQQHNSEHA RLQ
Isotype:	IgG
Specificity:	This antibody is expected to recognize both reported isoforms (NP_006781.1, NP_001129412.1).
Cross-Reactivity:	Human
Purification:	Purified from goat serum by ammonium sulphate precipitation followed by antigen affinity chromatography using the immunizing peptide.
Grade:	Verified

Target Details

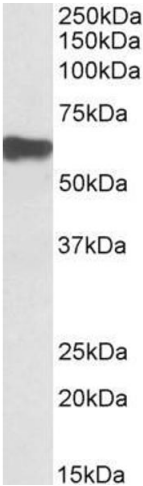
Target:	Myotilin (MYOT)
Alternative Name:	MYOT (MYOT Products)
Background:	MYOT, myotilin, LGMD1, LGMD1A, TTID, 57 kDa cytoskeletal protein, OTTHUMP00000159430, OTTHUMP00000223460, OTTHUMP00000223461, myofibrillar titin-like Ig domains protein, titin immunoglobulin domain protein (myotilin)
Gene ID:	9499
NCBI Accession:	NP_006781 , NP_001129412

Application Details

Application Notes:	Western Blot: Approx 60 kDa band observed in Human Skeletal Muscle lysates (calculated MW of 55.4 kDa according to NP_006781.1. Recommended concentration: 0.1-0.3 µg/mL. Peptide ELISA: antibody detection limit dilution 1:128000.
Restrictions:	For Research Use only

Handling

Format:	Liquid
Concentration:	0.5 mg/mL
Buffer:	Supplied at 0.5 mg/mL in Tris saline, 0.02 % sodium azide, pH 7.3 with 0.5 % bovine serum albumin.
Preservative:	Sodium azide
Precaution of Use:	This product contains Sodium azide: a POISONOUS AND HAZARDOUS SUBSTANCE which should be handled by trained staff only.
Handling Advice:	Minimize freezing and thawing.
Storage:	-20 °C
Storage Comment:	Aliquot and store at -20°C, with minimal freeze/thawing. A working aliquot may be refrigerated at 4°C for a few weeks and still remain viable.



Western Blotting

Image 1. ABIN5539630 (0.1µg/ml) staining of Human Skeletal Muscle lysate (35µg protein in RIPA buffer). Primary incubation was 1 hour. Detected by chemiluminescence.