

Datasheet for ABIN5539641
anti-SLC1A3 antibody (C-Term)



[Go to Product page](#)

1 Image

Overview

Quantity:	100 µg
Target:	SLC1A3
Binding Specificity:	C-Term
Reactivity:	Human
Host:	Goat
Clonality:	Polyclonal
Conjugate:	This SLC1A3 antibody is un-conjugated
Application:	Western Blotting (WB), ELISA

Product Details

Purpose:	EAAT1 / GLAST1
Sequence:	DNETEKPIDS ETK
Isotype:	IgG
Specificity:	This antibody is expected to recognize isoform 1 (NP_004163.3) and isoform 2 (NP_001160167.1).
Cross-Reactivity:	Human
Purification:	Purified from goat serum by ammonium sulphate precipitation followed by antigen affinity chromatography using the immunizing peptide.
Grade:	Verified

Target Details

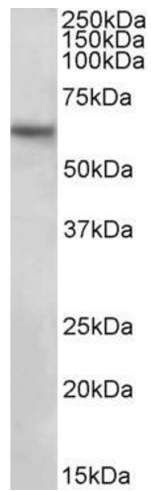
Target:	SLC1A3
Alternative Name:	SLC1A3 (SLC1A3 Products)
Background:	SLC1A3, solute carrier family 1 (glial high affinity glutamate transporter), member 3, EA6, EAAT1, FLJ25094, GLAST, GLAST1, GLAST-1, OTTHUMP00000116002, excitatory amino acid transporter 1, sodium-dependent glutamate/aspartate transporter 1, solute carrier
Gene ID:	6507
NCBI Accession:	NP_004163 , NP_001160167
Pathways:	Sensory Perception of Sound , Synaptic Membrane , Dicarboxylic Acid Transport

Application Details

Application Notes:	Western Blot: Approx 60 kDa band observed in Human Brain (Hippocampus) lysates (calculated MW of 59.6 kDa according to NP_004163.3). Recommended concentration: 1-3 µg/mL. Peptide ELISA: antibody detection limit dilution 1:8000.
Restrictions:	For Research Use only

Handling

Format:	Liquid
Concentration:	0.5 mg/mL
Buffer:	Supplied at 0.5 mg/mL in Tris saline, 0.02 % sodium azide, pH 7.3 with 0.5 % bovine serum albumin.
Preservative:	Sodium azide
Precaution of Use:	This product contains Sodium azide: a POISONOUS AND HAZARDOUS SUBSTANCE which should be handled by trained staff only.
Handling Advice:	Minimize freezing and thawing.
Storage:	-20 °C
Storage Comment:	Aliquot and store at -20°C, with minimal freeze/thawing. A working aliquot may be refrigerated at 4°C for a few weeks and still remain viable.



Western Blotting

Image 1. ABIN5539641 (2µg/ml) staining of Human Hippocampus lysate (35µg protein in RIPA buffer). Primary incubation was 1 hour. Detected by chemiluminescence.