

Datasheet for ABIN5539647

anti-KNG1 antibody (Internal Region)



[Go to Product page](#)

2 Images

Overview

Quantity:	100 µg
Target:	KNG1
Binding Specificity:	Internal Region
Reactivity:	Human
Host:	Goat
Clonality:	Polyclonal
Conjugate:	This KNG1 antibody is un-conjugated
Application:	Western Blotting (WB), Immunohistochemistry (IHC), ELISA

Product Details

Purpose:	kininogen 1
Sequence:	RITEATKTVG SDT
Isotype:	IgG
Specificity:	This antibody is expected to recognize all reported isoforms (NP_001095886.1, NP_000884.1, NP_001159923.1).
Cross-Reactivity:	Human
Purification:	Purified from goat serum by ammonium sulphate precipitation followed by antigen affinity chromatography using the immunizing peptide.
Grade:	Verified

Target Details

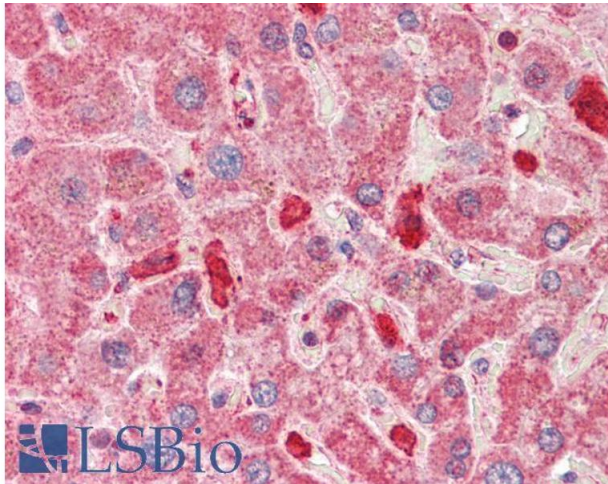
Target:	KNG1
Alternative Name:	KNG1 (KNG1 Products)
Background:	KNG1, kininogen 1, BDK, KNG, HMWK, alpha-2-thiol proteinase inhibitor, bradykinin, fitzgerald factor, high molecular weight kininogen, kininogen-1, williams-Fitzgerald-Flaujeac factor
Gene ID:	3827
NCBI Accession:	NP_001095886 , NP_000884 , NP_001159923
Pathways:	ACE Inhibitor Pathway , Glycosaminoglycan Metabolic Process

Application Details

Application Notes:	<p>Immunohistochemistry: Paraffin embedded Human Liver. Recommended concentration: 5 µg/mL.</p> <p>Western Blot: Approx 80+60+30 kDa bands observed in Human Kidney lysates (calculated MW of 72.0 kDa according to NP_001095886.1). The observed MW bands are explained by glycosylation and the splitting into heavy and light chains from the precursor protein.</p> <p>Peptide ELISA: antibody detection limit dilution 1:128000.</p>
Restrictions:	For Research Use only

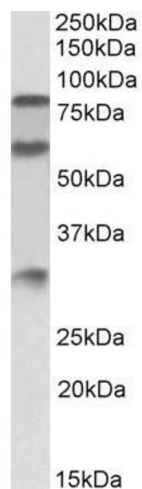
Handling

Format:	Liquid
Concentration:	0.5 mg/mL
Buffer:	Supplied at 0.5 mg/mL in Tris saline, 0.02 % sodium azide, pH 7.3 with 0.5 % bovine serum albumin.
Preservative:	Sodium azide
Precaution of Use:	This product contains Sodium azide: a POISONOUS AND HAZARDOUS SUBSTANCE which should be handled by trained staff only.
Handling Advice:	Minimize freezing and thawing.
Storage:	-20 °C
Storage Comment:	Aliquot and store at -20°C, with minimal freeze/thawing. A working aliquot may be refrigerated at 4°C for a few weeks and still remain viable.



Immunohistochemistry

Image 1. ABIN5539647 (5µg/ml) staining of paraffin embedded Human Liver. Steamed antigen retrieval with citrate buffer pH 6, AP-staining.



Western Blotting

Image 2. ABIN5539647 (0.3µg/ml) staining of Human Kidney lysate (35µg protein in RIPA buffer). Detected by chemiluminescence.