



Datasheet for ABIN5539653
anti-PTGR1 antibody (Internal Region)



[Go to Product page](#)

1 Image

Overview

Quantity:	100 µg
Target:	PTGR1
Binding Specificity:	Internal Region
Reactivity:	Human
Host:	Goat
Clonality:	Polyclonal
Conjugate:	This PTGR1 antibody is un-conjugated
Application:	Western Blotting (WB), ELISA

Product Details

Purpose:	PTGR1
Sequence:	PTNSDFELKT AELP
Isotype:	IgG
Specificity:	This antibody is expected to recognize both reported isoforms (NP_036344.2, NP_001139581.1). Reported variants represent identical protein: NP_036344.2, NP_001139580.1.
Cross-Reactivity:	Human
Purification:	Purified from goat serum by ammonium sulphate precipitation followed by antigen affinity chromatography using the immunizing peptide.
Grade:	Verified

Target Details

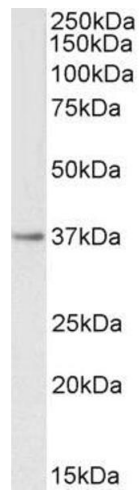
Target:	PTGR1
Alternative Name:	PTGR1 (PTGR1 Products)
Background:	PTGR1, prostaglandin reductase 1, LTB4DH, PGR1, ZADH3, 15-oxoprostaglandin 13-reductase, NADP-dependent leukotriene B4 12-hydroxydehydrogenase, PRG-1, leukotriene B4 12-hydroxydehydrogenase, zinc binding alcohol dehydrogenase domain containing 3
Gene ID:	22949
NCBI Accession:	NP_036344 , NP_001139581

Application Details

Application Notes:	Western Blot: Approx 37 kDa band observed in Human Kidney lysates (calculated MW of 35.9 kDa according to NP_036344.2). Recommended concentration: 0.3-1 µg/mL. Peptide ELISA: antibody detection limit dilution 1:128000.
Restrictions:	For Research Use only

Handling

Format:	Liquid
Concentration:	0.5 mg/mL
Buffer:	Supplied at 0.5 mg/mL in Tris saline, 0.02 % sodium azide, pH 7.3 with 0.5 % bovine serum albumin.
Preservative:	Sodium azide
Precaution of Use:	This product contains Sodium azide: a POISONOUS AND HAZARDOUS SUBSTANCE which should be handled by trained staff only.
Handling Advice:	Minimize freezing and thawing.
Storage:	-20 °C
Storage Comment:	Aliquot and store at -20°C, with minimal freeze/thawing. A working aliquot may be refrigerated at 4°C for a few weeks and still remain viable.



Western Blotting

Image 1. ABIN5539653 (0.3 μ g/ml) staining of Human Kidney lysate (35 μ g protein in RIPA buffer). Primary incubation was 1 hour. Detected by chemiluminescence.