

Datasheet for ABIN5539658
anti-PLIN3 antibody (AA 154-167)[Go to Product page](#)

1 Image

Overview

Quantity:	100 µg
Target:	PLIN3
Binding Specificity:	AA 154-167
Reactivity:	Human
Host:	Goat
Clonality:	Polyclonal
Conjugate:	This PLIN3 antibody is un-conjugated
Application:	Western Blotting (WB), ELISA

Product Details

Purpose:	perilipin 3 / TIP47 (aa154-167)
Sequence:	TRGAVQSGVD KTKS
Isotype:	IgG
Specificity:	This antibody is expected to recognize all reported isoforms (NP_005808.3, NP_001157661.1, NP_001157666.1).
Cross-Reactivity:	Human
Purification:	Purified from goat serum by ammonium sulphate precipitation followed by antigen affinity chromatography using the immunizing peptide.
Grade:	Verified

Target Details

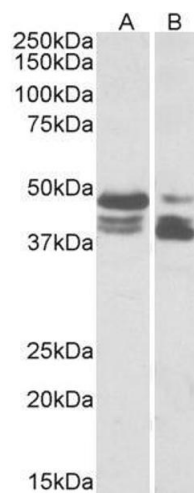
Target:	PLIN3
Alternative Name:	PLIN3 (PLIN3 Products)
Background:	PLIN3, perilipin 3, M6PRBP1, MGC11117, MGC2012, PP17, TIP47, 47 kDa MPR-binding protein, cargo selection protein TIP47, mannose-6-phosphate receptor-binding protein 1, perilipin-3, placental protein 17, tail-interacting protein, 47 kD
Gene ID:	10226
NCBI Accession:	NP_005808 , NP_001157661 , NP_001157666

Application Details

Application Notes:	Western Blot: Approx 48 kDa+45 kDa double bands observed in lysates of cell line HeLa and of Human Colon cancer (calculated MW of 47.1 kDa according to NP_NP_005808.3, 46.9 kDa according to NP_001157661.1 and 45.8 kDa according to NP_001157666.1). The observe Peptide ELISA: antibody detection limit dilution 1:128000.
Restrictions:	For Research Use only

Handling

Format:	Liquid
Concentration:	0.5 mg/mL
Buffer:	Supplied at 0.5 mg/mL in Tris saline, 0.02 % sodium azide, pH 7.3 with 0.5 % bovine serum albumin.
Preservative:	Sodium azide
Precaution of Use:	This product contains Sodium azide: a POISONOUS AND HAZARDOUS SUBSTANCE which should be handled by trained staff only.
Handling Advice:	Minimize freezing and thawing.
Storage:	-20 °C
Storage Comment:	Aliquot and store at -20°C, with minimal freeze/thawing. A working aliquot may be refrigerated at 4°C for a few weeks and still remain viable.



Western Blotting

Image 1. ABIN5539658 (0.03µg/ml) staining of HeLa (lane 1) and Human Colon cancer (lane two) lysate (35µg protein in RIPA buffer). Primary incubation was 1 hour. Detected by chemiluminescence.