

Datasheet for ABIN5539666
anti-SHROOM2 antibody (C-Term)[Go to Product page](#)

1 Image

Overview

Quantity:	100 µg
Target:	SHROOM2
Binding Specificity:	C-Term
Reactivity:	Human
Host:	Goat
Clonality:	Polyclonal
Conjugate:	This SHROOM2 antibody is un-conjugated
Application:	ELISA, Immunohistochemistry (IHC)

Product Details

Purpose:	APXL
Sequence:	KCLLDLQPE RGK
Isotype:	IgG
Cross-Reactivity:	Cow, Human
Purification:	Purified from goat serum by ammonium sulphate precipitation followed by antigen affinity chromatography using the immunizing peptide.
Grade:	Verified

Target Details

Target:	SHROOM2
---------	---------

Target Details

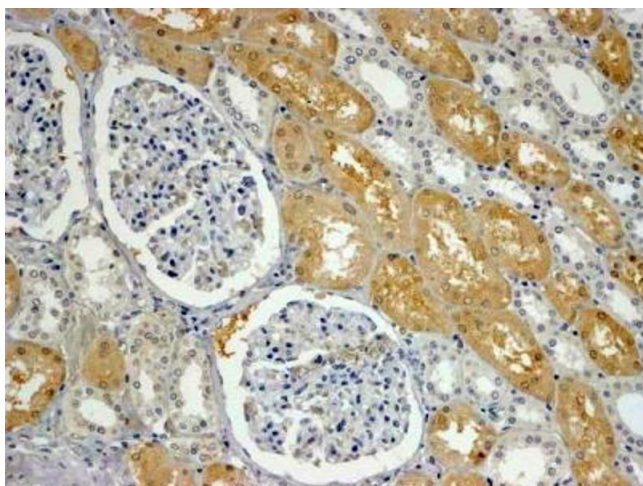
Alternative Name:	SHROOM2 (SHROOM2 Products)
Background:	SHROOM2, APXL, HSAPXL, apical protein-like (Xenopus laevis), APX homolog of Xenopus, shroom family member 2, DKFZp781J074, FLJ39277, apical protein of Xenopus-like, apical protein, Xenopus laevis-like
Gene ID:	357
NCBI Accession:	NP_001640
Pathways:	Cell-Cell Junction Organization , Asymmetric Protein Localization

Application Details

Application Notes:	Immunohistochemistry: In paraffin embedded Human Kidney shows cytoplasm staining in PCT exclusively. Recommended concentration, 4-6 µg/mL. Peptide ELISA: antibody detection limit dilution 1:32000.
Restrictions:	For Research Use only

Handling

Format:	Liquid
Concentration:	0.5 mg/mL
Buffer:	Supplied at 0.5 mg/mL in Tris saline, 0.02 % sodium azide, pH 7.3 with 0.5 % bovine serum albumin.
Preservative:	Sodium azide
Precaution of Use:	This product contains Sodium azide: a POISONOUS AND HAZARDOUS SUBSTANCE which should be handled by trained staff only.
Handling Advice:	Minimize freezing and thawing.
Storage:	-20 °C
Storage Comment:	Aliquot and store at -20°C, with minimal freeze/thawing. A working aliquot may be refrigerated at 4°C for a few weeks and still remain viable.



Immunohistochemistry

Image 1. ABIN5539666 (4µg/ml) staining of paraffin embedded Human Kidney. Steamed antigen retrieval with Tris/EDTA buffer pH 9, HRP-staining.