

Datasheet for ABIN5539672 anti-HMGCS1 antibody (AA 321-332)



[Go to Product page](#)

1 Image

Overview

Quantity:	100 µg
Target:	HMGCS1
Binding Specificity:	AA 321-332
Reactivity:	Human
Host:	Goat
Clonality:	Polyclonal
Conjugate:	This HMGCS1 antibody is un-conjugated
Application:	Western Blotting (WB), ELISA

Product Details

Purpose:	HMGCS1 (aa321-332)
Sequence:	KASSELFQK TK
Isotype:	IgG
Specificity:	Reported variants represent identical protein: NP_002121.4, NP_001091742.1.
Cross-Reactivity:	Human
Purification:	Purified from goat serum by ammonium sulphate precipitation followed by antigen affinity chromatography using the immunizing peptide.
Grade:	Verified

Target Details

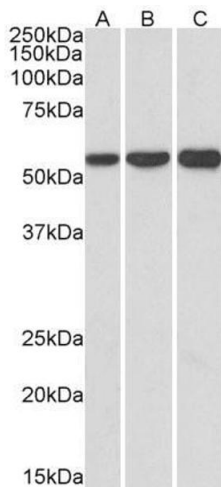
Target:	HMGCS1
Alternative Name:	HMGCS1 (HMGCS1 Products)
Background:	HMGCS1, 3-hydroxy-3-methylglutaryl-CoA synthase 1 (soluble), HMGCS, 3-hydroxy-3-methylglutaryl coenzyme A (HMG-CoA) synthase, 3-hydroxy-3-methylglutaryl-Coenzyme A synthase 1 (soluble), hydroxymethylglutaryl-CoA synthase, cytoplasmic
Gene ID:	3157
NCBI Accession:	NP_002121
Pathways:	Regulation of Lipid Metabolism by PPARalpha

Application Details

Application Notes:	Western Blot: Approx 57 kDa band observed in lysates of cell lines HeLa, HepG2, and K562 (calculated MW of 57.3 kDa according to NP_002121.4). Recommended concentration: 1-3 µg/mL. Peptide ELISA: antibody detection limit dilution 1:128000.
Restrictions:	For Research Use only

Handling

Format:	Liquid
Concentration:	0.5 mg/mL
Buffer:	Supplied at 0.5 mg/mL in Tris saline, 0.02 % sodium azide, pH 7.3 with 0.5 % bovine serum albumin.
Preservative:	Sodium azide
Precaution of Use:	This product contains Sodium azide: a POISONOUS AND HAZARDOUS SUBSTANCE which should be handled by trained staff only.
Handling Advice:	Minimize freezing and thawing.
Storage:	-20 °C
Storage Comment:	Aliquot and store at -20°C, with minimal freeze/thawing. A working aliquot may be refrigerated at 4°C for a few weeks and still remain viable.



Western Blotting

Image 1. ABIN5539671 (1µg/ml) staining of HeLa (A), HepG2 (B) and K562 (C) lysates (35µg protein in RIPA buffer). Primary incubation was 1 hour. Detected by chemiluminescence.