

Datasheet for ABIN5539679

## anti-ALDH2 antibody (Internal Region) (Biotin)



[Go to Product page](#)

### 1 Image

#### Overview

Quantity:	100 µg
Target:	ALDH2
Binding Specificity:	Internal Region
Reactivity:	Human, Mouse, Rat
Host:	Goat
Clonality:	Polyclonal
Conjugate:	This ALDH2 antibody is conjugated to Biotin
Application:	Western Blotting (WB), ELISA

#### Product Details

Purpose:	ALDH2, Biotinylated
Sequence:	DETQFKKILG YIN.
Isotype:	IgG
Specificity:	This antibody is expected to recognize both reported isoforms (NP_000681.2, NP_001191818.1).
Cross-Reactivity:	Cow, Dog, Human, Mouse, Pig, Rat
Purification:	Purified from goat serum by ammonium sulphate precipitation followed by antigen affinity chromatography using the immunizing peptide.
Grade:	Verified

## Target Details

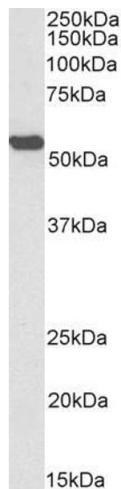
Target:	ALDH2
Alternative Name:	ALDH2 ( <a href="#">ALDH2 Products</a> )
Background:	ALDH2, aldehyde dehydrogenase 2 family (mitochondrial), ALDH-E2, ALDHI, ALDM, ALDH class 2, acetaldehyde dehydrogenase 2, liver mitochondrial ALDH, nucleus-encoded mitochondrial aldehyde dehydrogenase 2
Gene ID:	217, 11669, 29539
NCBI Accession:	<a href="#">NP_000681</a> , <a href="#">NP_001191818</a>

## Application Details

Application Notes:	Western Blot: Approx 55 kDa band observed in Mouse Liver lysates (calculated MW of 56.5 kDa according to Mouse NP_033786.1). See non-biotinylated parental product's datasheet for further QC data. Recommended concentration: 0.3-1 µg/mL. Peptide ELISA: antibody detection limit dilution 1:8000.
Restrictions:	For Research Use only

## Handling

Format:	Liquid
Concentration:	0.5 mg/mL
Buffer:	Supplied at 0.5 mg/mL in Tris saline, 0.02 % sodium azide, pH 7.3 with 0.5 % bovine serum albumin.
Preservative:	Sodium azide
Precaution of Use:	This product contains Sodium azide: a POISONOUS AND HAZARDOUS SUBSTANCE which should be handled by trained staff only.
Handling Advice:	Minimize freezing and thawing.
Storage:	-20 °C
Storage Comment:	Aliquot and store at -20°C, with minimal freeze/thawing. A working aliquot may be refrigerated at 4°C for a few weeks and still remain viable.



### Western Blotting

**Image 1.** Biotinylated ABIN5539679 (0.3µg/ml) staining of Mouse Liver lysate (35µg protein in RIPA buffer), exactly mirroring its parental non-biotinylated product. Primary incubation was 1 hour. Detected by chemiluminescence, using streptavidin-HRP and using NAP blocker as a substitute for skimmed milk.