

Datasheet for ABIN5539681
anti-alpha Adaptin antibody (AA 706-727)

5 Images

1 Publication

[Go to Product page](#)

Overview

Quantity:	100 µg
Target:	alpha Adaptin (AP2A1)
Binding Specificity:	AA 706-727
Reactivity:	Human
Host:	Goat
Clonality:	Polyclonal
Conjugate:	This alpha Adaptin antibody is un-conjugated
Application:	Western Blotting (WB), ELISA

Product Details

Purpose:	AP2A1 (aa706-727)
Sequence:	ELEPPAPESP MALLADPAPA AD
Isotype:	IgG
Specificity:	This antibody is expected to recognize reported isoform 1 (NP_055018.2) only.
Cross-Reactivity:	Cow, Human, Mouse, Pig, Rat
Purification:	Purified from goat serum by ammonium sulphate precipitation followed by antigen affinity chromatography using the immunizing peptide.
Grade:	Verified

Target Details

Target:	alpha Adaptin (AP2A1)
Alternative Name:	AP2A1 (AP2A1 Products)
Background:	AP2A1, adaptor-related protein complex 2, alpha 1 subunit, ADTAA, AP2-ALPHA, CLAPA1, 100 kDa coated vesicle protein A, AP-2 complex subunit alpha-1, adapter-related protein complex 2 alpha-1 subunit, adaptin, alpha A, adaptor protein complex AP-2 subunit
Gene ID:	160, 11771, 308578
NCBI Accession:	NP_055018
Pathways:	Notch Signaling , EGFR Signaling Pathway , Neurotrophin Signaling Pathway , EGFR Downregulation

Application Details

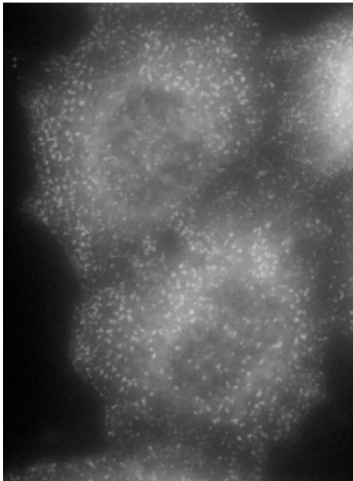
Application Notes:	Western Blot: Approx 110 kDa band observed in Human Brain (Frontal cortex) lysates (calculated MW of 108 kDa according to NP_055018.2). Recommended concentration: 0.03-0.1 µg/mL. Primary incubation was 1 hour. Peptide ELISA: antibody detection limit dilution 1:128000.
Restrictions:	For Research Use only

Handling

Format:	Liquid
Concentration:	0.5 mg/mL
Buffer:	Supplied at 0.5 mg/mL in Tris saline, 0.02 % sodium azide, pH 7.3 with 0.5 % bovine serum albumin.
Preservative:	Sodium azide
Precaution of Use:	This product contains Sodium azide: a POISONOUS AND HAZARDOUS SUBSTANCE which should be handled by trained staff only.
Handling Advice:	Minimize freezing and thawing.
Storage:	-20 °C
Storage Comment:	Aliquot and store at -20°C, with minimal freeze/thawing. A working aliquot may be refrigerated at 4°C for a few weeks and still remain viable.

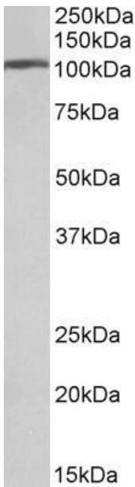
Product cited in: Buser, Ritz, Moes, Tostado, Frank, Spiess, Mariani, Jenö, Boulay, Hutter: "Quantitative proteomics reveals reduction of endocytic machinery components in gliomas." in: **EBioMedicine**, Vol. 46, pp. 32-41, (2020) ([PubMed](#)).

Images



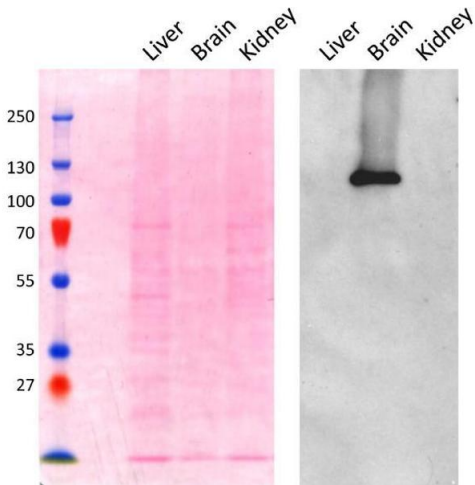
Immunocytochemistry

Image 1. (ABIN5539681) (0.1 µg/mL) staining of methanol-fixed HeLa cells with stably expressing Mouse Ap2a1. Primary incubation was 1 hour. Detected by Alexa Fluor 594. Data obtained from Prof. M Robinson, CIMR, Cambridge, UK. This data is from a previous batch, not on sale.



Western Blotting

Image 2. Antibody (0.01µg/ml) staining of Human Frontal Cortex lysate (35µg protein in RIPA buffer). Primary incubation was 1 hour. Detected by chemiluminescence.



Western Blotting

Image 3. ABIN5539681 (0.1µg/ml) staining of Mouse Brain lysate (~5µg protein in SDSPAGE buffer). The left panel shows the same blot stained with Ponceau red for total protein stain as the loading control before labelling. Primary incubation was 1 hour. Detected by chemiluminescence.

Images

Please check the [product details page](#) for more images. Overall 5 images are available for ABIN5539681.