

Datasheet for ABIN5539684  
**anti-APOBEC3D antibody (AA 61-74)**



[Go to Product page](#)

2 Images

Overview

|                      |  |
|----------------------|--|
| Quantity:            | 100 µg   |
| Target:              | APOBEC3D   |
| Binding Specificity: | AA 61-74   |
| Reactivity:          | Human  |
| Host:                | Goat   |
| Clonality:           | Polyclonal   |
| Conjugate:           | This APOBEC3D antibody is un-conjugated                  |
| Application:         | Western Blotting (WB), ELISA, Immunohistochemistry (IHC) |

Product Details

|                   |   |
|-------------------|---|
| Purpose:          | APOBEC3D (aa61-74)  |
| Sequence:         | PKRQSNHRQE VYFR   |
| Isotype:          | IgG   |
| Cross-Reactivity: | Human   |
| Purification:     | Purified from goat serum by ammonium sulphate precipitation followed by antigen affinity chromatography using the immunizing peptide. |
| Grade:            | Verified  |

Target Details

|         |          |
|---------|----------|
| Target: | APOBEC3D |
|---------|----------|

## Target Details

---

|                   |   |
|-------------------|---|
| Alternative Name: | APOBEC3D ( <a href="#">APOBEC3D Products</a> )  |
| Background:       | APOBEC3D, apolipoprotein B mRNA editing enzyme, catalytic polypeptide-like 3D, APOBEC3DE, APOBEC3E, ARP6, DNA dC->dU-editing enzyme APOBEC-3D, apolipoprotein B mRNA editing enzyme, catalytic polypeptide-like 3E pseudogene, probable DNA dC->dU-editing enzy |
| Gene ID:          | 140564  |
| NCBI Accession:   | <a href="#">NP_689639</a>   |

## Application Details

---

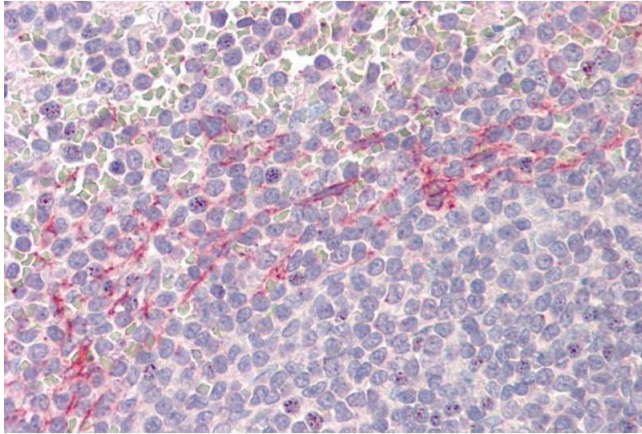
|                    |  |
|--------------------|--|
| Application Notes: | Immunohistochemistry: Paraffin embedded Human Spleen. Recommended concentration: 3.75 µg/mL.<br>Western Blot: Approx 45 kDa band observed in lysates of cell line A549 (calculated MW of 46.6 kDa according to NP_689639.2). Recommended concentration: 0.3-1 µg/mL. Primary incubation was 1 hour.<br>Peptide ELISA: antibody detection limit dilution 1:32000. |
|--------------------|--|

|               |                       |
|---------------|-----------------------|
| Restrictions: | For Research Use only |
|---------------|-----------------------|

## Handling

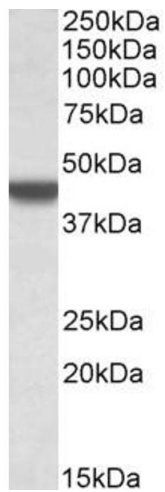
---

|                    |  |
|--------------------|--|
| Format:            | Liquid   |
| Concentration:     | 0.5 mg/mL  |
| Buffer:            | Supplied at 0.5 mg/mL in Tris saline, 0.02 % sodium azide, pH 7.3 with 0.5 % bovine serum albumin.   |
| Preservative:      | Sodium azide   |
| Precaution of Use: | This product contains Sodium azide: a POISONOUS AND HAZARDOUS SUBSTANCE which should be handled by trained staff only.                         |
| Handling Advice:   | Minimize freezing and thawing.   |
| Storage:           | -20 °C   |
| Storage Comment:   | Aliquot and store at -20°C, with minimal freeze/thawing. A working aliquot may be refrigerated at 4°C for a few weeks and still remain viable. |



### Immunohistochemistry

**Image 1.** ABIN5539684 (3.75 $\mu$ g/ml) staining of paraffin embedded Human Spleen. Steamed antigen retrieval with citrate buffer pH 6, AP-staining.



### Western Blotting

**Image 2.** ABIN5539684 (0.3 $\mu$ g/ml) staining of A549 lysate (35 $\mu$ g protein in RIPA buffer). Detected by chemiluminescence.