



[Go to Product page](#)

Datasheet for ABIN5539693

anti-CA12 antibody (AA 188-199) (Biotin)

1 Image

Overview

Quantity:	100 µg
Target:	CA12
Binding Specificity:	AA 188-199
Reactivity:	Human
Host:	Goat
Clonality:	Polyclonal
Conjugate:	This CA12 antibody is conjugated to Biotin
Application:	Western Blotting (WB), ELISA, Immunohistochemistry (IHC)

Product Details

Purpose:	carbonic anhydrase XII (aa188-199), Biotinylated
Sequence:	CSHLQHVKYK GQE.
Isotype:	IgG
Specificity:	This antibody is expected to recognize all reported isoforms (NP_001209.1, NP_996808.1, NP_001280571.1).
Cross-Reactivity:	Human
Purification:	Purified from goat serum by ammonium sulphate precipitation followed by antigen affinity chromatography using the immunizing peptide.
Grade:	Verified

Target Details

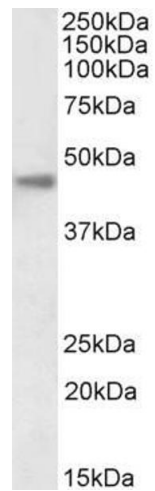
Target:	CA12
Alternative Name:	CA12 (CA12 Products)
Background:	CA12, carbonic anhydrase 12, CA-XII, CAXII, HsT18816, T18816, carbonate dehydratase XII, carbonic anhydrase XII, carbonic dehydratase, tumor antigen HOM-RCC-3.1.3
Gene ID:	771
NCBI Accession:	NP_001209 , NP_996808 , NP_001280571

Application Details

Application Notes:	Western Blot: Approx 45 kDa band observed in Human kidney lysates (calculated MW of 39.5 kDa according to NP_001209.1). See non-biotinylated parental product's datasheet for further QC data. Recommended concentration: 0.1-0.3 µg/mL. Peptide ELISA: antibody detection limit dilution 1:128000.
Restrictions:	For Research Use only

Handling

Format:	Liquid
Concentration:	0.5 mg/mL
Buffer:	Supplied at 0.5 mg/mL in Tris saline, 0.02 % sodium azide, pH 7.3 with 0.5 % bovine serum albumin.
Preservative:	Sodium azide
Precaution of Use:	This product contains Sodium azide: a POISONOUS AND HAZARDOUS SUBSTANCE which should be handled by trained staff only.
Handling Advice:	Minimize freezing and thawing.
Storage:	-20 °C
Storage Comment:	Aliquot and store at -20°C, with minimal freeze/thawing. A working aliquot may be refrigerated at 4°C for a few weeks and still remain viable.



Western Blotting

Image 1. Biotinylated ABIN5539693 (0.1µg/ml) staining of Human Kidney lysate (35µg protein in RIPA buffer), exactly mirroring its parental non-biotinylated product. Primary incubation was 1 hour. Detected by chemiluminescence, using streptavidin-HRP and using NAP blocker as a substitute for skimmed milk.