

Datasheet for ABIN5539702
anti-CXCR7 antibody (C-Term)



[Go to Product page](#)

1 Image

Overview

Quantity:	100 µg
Target:	CXCR7
Binding Specificity:	C-Term
Reactivity:	Human
Host:	Goat
Clonality:	Polyclonal
Conjugate:	This CXCR7 antibody is un-conjugated
Application:	Western Blotting (WB), ELISA

Product Details

Purpose:	CXCR7 / RDC1
Sequence:	TEYSALEQST K
Isotype:	IgG
Cross-Reactivity:	Human
Purification:	Purified from goat serum by ammonium sulphate precipitation followed by antigen affinity chromatography using the immunizing peptide.
Grade:	Verified

Target Details

Target:	CXCR7
---------	-------

Target Details

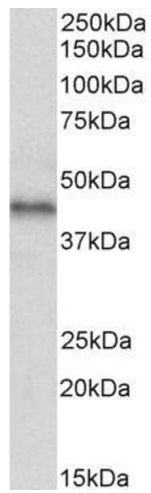
Alternative Name:	ACKR3 (CXCR7 Products)
Background:	ACKR3, atypical chemokine receptor 3, CMKOR1, CXC-R7, CXCR-7, CXCR7, GPR159, RDC-1, RDC1, C-X-C chemokine receptor type 7, G protein-coupled receptor, G-protein coupled receptor 159, G-protein coupled receptor RDC1 homolog, chemokine (C-X-C motif) recepto
Gene ID:	57007
NCBI Accession:	NP_064707
Pathways:	Myometrial Relaxation and Contraction , Negative Regulation of intrinsic apoptotic Signaling

Application Details

Application Notes:	Western Blot: Approx 42 kDa band observed in Human Breast cancer lysates (calculated MW of 41.5 kDa according to NP_064707.1). Recommended concentration: 1-3 µg/mL. Peptide ELISA: antibody detection limit dilution 1:64000.
Restrictions:	For Research Use only

Handling

Format:	Liquid
Concentration:	0.5 mg/mL
Buffer:	Supplied at 0.5 mg/mL in Tris saline, 0.02 % sodium azide, pH 7.3 with 0.5 % bovine serum albumin.
Preservative:	Sodium azide
Precaution of Use:	This product contains Sodium azide: a POISONOUS AND HAZARDOUS SUBSTANCE which should be handled by trained staff only.
Handling Advice:	Minimize freezing and thawing.
Storage:	-20 °C
Storage Comment:	Aliquot and store at -20°C, with minimal freeze/thawing. A working aliquot may be refrigerated at 4°C for a few weeks and still remain viable.



Western Blotting

Image 1. ABIN5539702 (2 μ g/ml) staining of Human Breast cancer lysate (35 μ g protein in RIPA buffer). Primary incubation was 1 hour. Detected by chemiluminescence.