

Datasheet for ABIN5539703

**anti-CYP26A1 antibody (Internal Region)****3** Images[Go to Product page](#)

## Overview

Quantity:	100 µg
Target:	CYP26A1
Binding Specificity:	Internal Region
Reactivity:	Human
Host:	Goat
Clonality:	Polyclonal
Conjugate:	This CYP26A1 antibody is un-conjugated
Application:	ELISA, Immunohistochemistry (IHC), Immunocytochemistry (ICC)

## Product Details

Purpose:	CYP26A1
Sequence:	NLPARFTHFH GE
Isotype:	IgG
Specificity:	This antibody is expected to recognize both reported isoforms (NP_000774.2, NP_476498.1)
Cross-Reactivity:	Human
Purification:	Purified from goat serum by ammonium sulphate precipitation followed by antigen affinity chromatography using the immunizing peptide.
Grade:	Verified

## Target Details

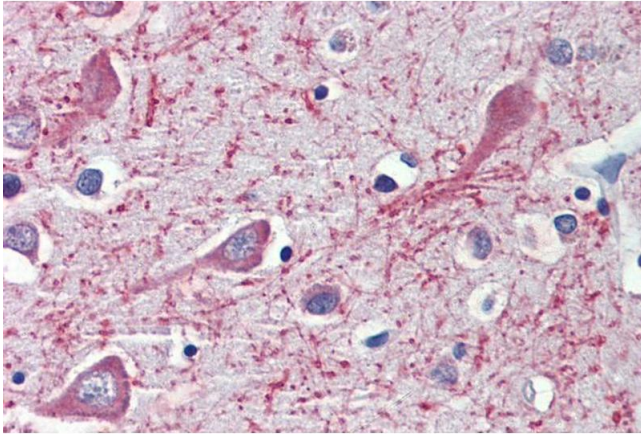
Target:	CYP26A1
Alternative Name:	CYP26A1 ( <a href="#">CYP26A1 Products</a> )
Background:	CYP26A1, cytochrome P450, family 26, subfamily A, polypeptide 1, CP26, CYP26, P450RAI, P450RAI1, P450, retinoic acid-inactivating, 1, cytochrome P450, subfamily XXVIA, polypeptide 1, retinoic acid 4-hydroxylase, retinoic acid-metabolizing cytochrome
Gene ID:	1592
NCBI Accession:	<a href="#">NP_000774</a> , <a href="#">NP_476498</a>
Pathways:	<a href="#">Retinoic Acid Receptor Signaling Pathway</a> , <a href="#">Monocarboxylic Acid Catabolic Process</a>

## Application Details

Application Notes:	Immunohistochemistry: Paraffin embedded Human Brain (Cortex and Cerebellum). Recommended concentration: 3.75 µg/mL. Peptide ELISA: antibody detection limit dilution 1:16000.
Comment:	<b>Immunocytochemistry:</b> ER-staining of PFA-fixed and TX100-treated HeLa cells. Recommended concentration: 2-5ug/ml.
Restrictions:	For Research Use only

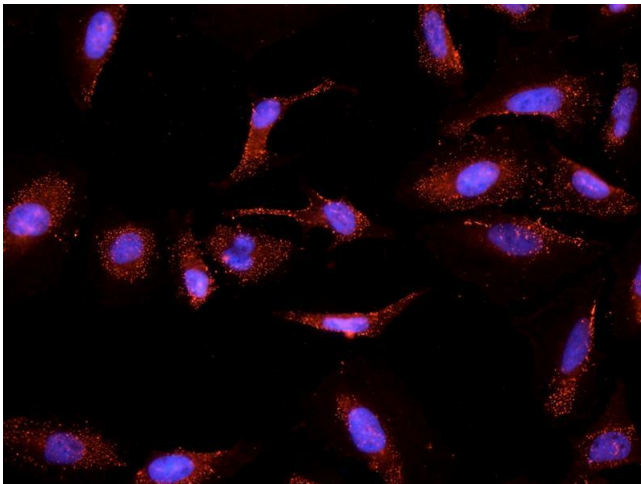
## Handling

Format:	Liquid
Concentration:	0.5 mg/mL
Buffer:	Supplied at 0.5 mg/mL in Tris saline, 0.02 % sodium azide, pH 7.3 with 0.5 % bovine serum albumin.
Preservative:	Sodium azide
Precaution of Use:	This product contains Sodium azide: a POISONOUS AND HAZARDOUS SUBSTANCE which should be handled by trained staff only.
Handling Advice:	Minimize freezing and thawing.
Storage:	-20 °C
Storage Comment:	Aliquot and store at -20°C, with minimal freeze/thawing. A working aliquot may be refrigerated at 4°C for a few weeks and still remain viable.



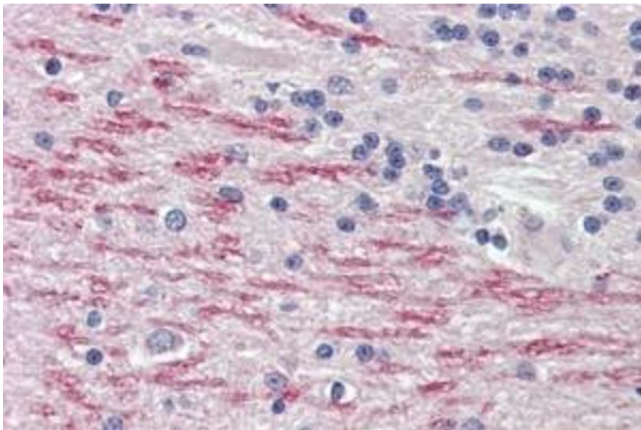
#### Immunohistochemistry

**Image 1.** ABIN5539703 (3.75µg/ml) staining of paraffin embedded Human Cortex. Steamed antigen retrieval with citrate buffer pH 6, AP-staining.



#### Immunocytochemistry

**Image 2.** ABIN5539703 (2.5µg/ml) staining of PFA-fixed and TX100-treated HeLa cells after primary labelling overnight at 4C with DAPI nuclear counterstaining in blue.



#### Immunohistochemistry

**Image 3.** ABIN5539703 (3.75µg/ml) staining of paraffin embedded Human Cerebellum. Steamed antigen retrieval with citrate buffer pH 6, AP-staining.