



[Go to Product page](#)

Datasheet for ABIN5539715  
**anti-SGCD antibody (AA 245-257)**

2 Images

Overview

Quantity:	100 µg
Target:	SGCD
Binding Specificity:	AA 245-257
Reactivity:	Human, Rat
Host:	Goat
Clonality:	Polyclonal
Conjugate:	This SGCD antibody is un-conjugated
Application:	Western Blotting (WB), Immunohistochemistry (IHC), ELISA

Product Details

Purpose:	Delta-Sarcoglycan (aa245-257)
Sequence:	RLPHGSYTPT GTR
Isotype:	IgG
Specificity:	This antibody is expected to recognize isoform 1 (NP_000328.2) and isoform 3 (NP_001121681.1).
Cross-Reactivity:	Cow, Dog, Human, Mouse, Pig, Rat
Purification:	Purified from goat serum by ammonium sulphate precipitation followed by antigen affinity chromatography using the immunizing peptide.
Grade:	Verified

## Target Details

---

Target:	SGCD
Alternative Name:	SGCD ( <a href="#">SGCD Products</a> )
Background:	SGCD, sarcoglycan, delta (35 kDa dystrophin-associated glycoprotein), 35DAG, CMD1L, DAGD, MGC22567, SG-delta, SGCDP, SGD, 35 kDa dystrophin-associated glycoprotein, 35kD dystrophin-associated glycoprotein, delta-SG, delta-sarcoglycan, dystrophin associated
Gene ID:	6444, 24052, 497892
NCBI Accession:	<a href="#">NP_000328</a> , <a href="#">NP_758447</a> , <a href="#">NP_001121681</a>
Pathways:	<a href="#">Maintenance of Protein Location</a>

## Application Details

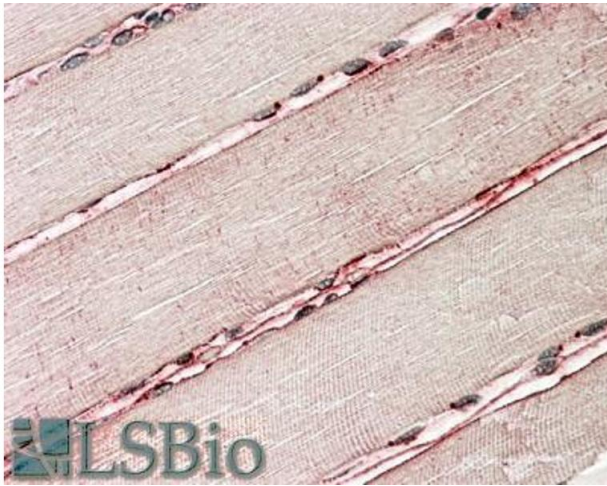
---

Application Notes:	<p>Immunohistochemistry: In paraffin embedded Human Skeletal Muscle shows sarcolemmar staining of the fibres. Recommended concentration, 3-5 µg/mL.</p> <p>Western Blot: Approx 37 kDa band observed in Human and Rat Heart lysates (calculated MW of 32.2 kDa according to NP_000328.2). The observed molecular weight corresponds to the glycosylated form. Recommended concentration: 0.1-0.3 µg/mL.</p> <p>Peptide ELISA: antibody detection limit dilution 1:16000.</p>
Restrictions:	For Research Use only

## Handling

---

Format:	Liquid
Concentration:	0.5 mg/mL
Buffer:	Supplied at 0.5 mg/mL in Tris saline, 0.02 % sodium azide, pH 7.3 with 0.5 % bovine serum albumin.
Preservative:	Sodium azide
Precaution of Use:	This product contains Sodium azide: a POISONOUS AND HAZARDOUS SUBSTANCE which should be handled by trained staff only.
Handling Advice:	Minimize freezing and thawing.
Storage:	-20 °C
Storage Comment:	Aliquot and store at -20°C, with minimal freeze/thawing. A working aliquot may be refrigerated at 4°C for a few weeks and still remain viable.



### Immunohistochemistry

**Image 1.** ABIN5539715 (3.8 $\mu$ g/ml) staining of paraffin embedded Human Skeletal Muscle. Steamed antigen retrieval with citrate buffer pH 6, AP-staining.



### Western Blotting

**Image 2.** ABIN5539715 (0.1 $\mu$ g/ml) staining of Human Heart lysate (35 $\mu$ g protein in RIPA buffer). Primary incubation was 1 hour. Detected by chemiluminescence.