

Datasheet for ABIN5539737

anti-IFITM3 antibody (Internal Region)**3** Images[Go to Product page](#)

Overview

Quantity:	100 µg
Target:	IFITM3
Binding Specificity:	Internal Region
Reactivity:	Human
Host:	Goat
Clonality:	Polyclonal
Conjugate:	This IFITM3 antibody is un-conjugated
Application:	Western Blotting (WB), ELISA, Immunohistochemistry (IHC)

Product Details

Purpose:	IFITM3
Sequence:	HNPAPPTSTV IHIRS
Isotype:	IgG
Specificity:	The immunizing peptide only differs by one residue from IFITM2 and therefore cross-reactivation of this antibody is to be expected.
Cross-Reactivity:	Human
Purification:	Purified from goat serum by ammonium sulphate precipitation followed by antigen affinity chromatography using the immunizing peptide.
Grade:	Verified

Target Details

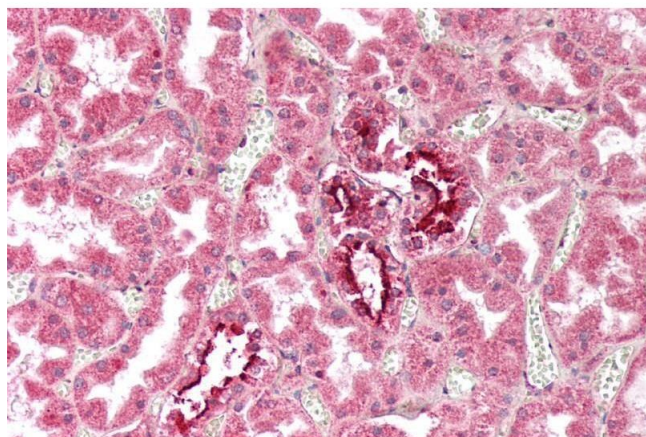
Target:	IFITM3
Alternative Name:	IFITM3 (IFITM3 Products)
Background:	IFITM3, interferon induced transmembrane protein 3, 1-8U, DSPA2b, IP15, dispanin subfamily A member 2b, interferon-induced transmembrane protein 3, interferon-inducible protein 1-8U
Gene ID:	10410
NCBI Accession:	NP_066362

Application Details

Application Notes:	<p>Immunohistochemistry: Paraffin embedded Human Kidney and Spleen. Recommended concentration: 2.5 µg/mL.</p> <p>Western Blot: Approx 17 kDa band observed in lysates of cell line HeLa (calculated MW of 14.6 kDa according to NP_066362.2). The observed molecular weight corresponds to the lipidated form. Recommended concentration: 0.3-1 µg/mL. Primary incubation was 1 ho</p> <p>Peptide ELISA: antibody detection limit dilution 1:64000.</p>
Restrictions:	For Research Use only

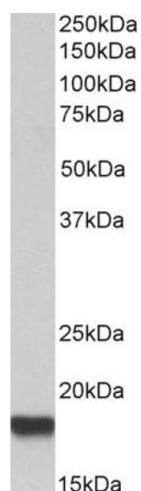
Handling

Format:	Liquid
Concentration:	0.5 mg/mL
Buffer:	Supplied at 0.5 mg/mL in Tris saline, 0.02 % sodium azide, pH 7.3 with 0.5 % bovine serum albumin.
Preservative:	Sodium azide
Precaution of Use:	This product contains Sodium azide: a POISONOUS AND HAZARDOUS SUBSTANCE which should be handled by trained staff only.
Handling Advice:	Minimize freezing and thawing.
Storage:	-20 °C
Storage Comment:	Aliquot and store at -20°C, with minimal freeze/thawing. A working aliquot may be refrigerated at 4°C for a few weeks and still remain viable.



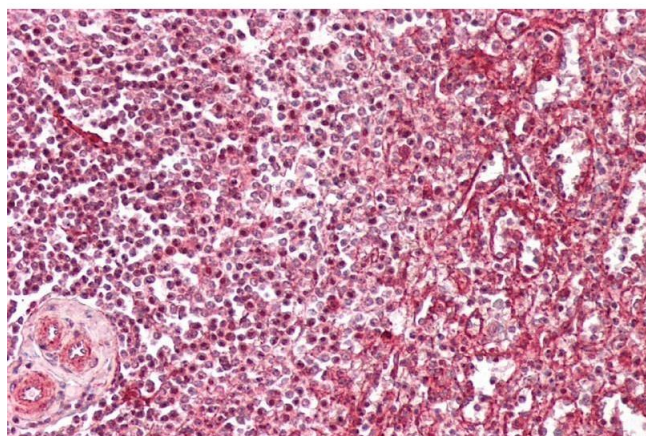
Immunohistochemistry

Image 1. ABIN5539737 (2.5µg/ml) staining of paraffin embedded Human Kidney. Steamed antigen retrieval with citrate buffer pH 6, AP-staining.



Western Blotting

Image 2. ABIN5539737 (0.5µg/ml) staining of HeLa lysate (35µg protein in RIPA buffer). Detected by chemiluminescence.



Immunohistochemistry

Image 3. ABIN5539737 (2.5µg/ml) staining of paraffin embedded Human Spleen. Steamed antigen retrieval with citrate buffer pH 6, AP-staining.