



Datasheet for ABIN5539751
anti-PRKACA antibody (Internal Region)



[Go to Product page](#)

1 Image

Overview

Quantity:	100 µg
Target:	PRKACA
Binding Specificity:	Internal Region
Reactivity:	Human
Host:	Goat
Clonality:	Polyclonal
Conjugate:	This PRKACA antibody is un-conjugated
Application:	Western Blotting (WB), ELISA

Product Details

Purpose:	PRKACA
Sequence:	ESPAQNTAHL DQ
Isotype:	IgG
Specificity:	This antibody is expected to recognize all three reported isoforms (NP_002721.1, NP_997401.1, NP_001291278.1). Based on the choice of the immunizing peptide there is no expected cross-reactivity with the other subunits.
Cross-Reactivity:	Human
Purification:	Purified from goat serum by ammonium sulphate precipitation followed by antigen affinity chromatography using the immunizing peptide.
Grade:	Verified

Target Details

Target:	PRKACA
Alternative Name:	PRKACA (PRKACA Products)
Background:	PRKACA, protein kinase, cAMP-dependent, catalytic, alpha, PKACA, PPNAD4, PKA C-alpha, cAMP-dependent protein kinase catalytic subunit alpha, protein kinase A catalytic subunit
Gene ID:	5566
NCBI Accession:	NP_002721 , NP_997401 , NP_001291278
Pathways:	NF-kappaB Signaling , Hedgehog Signaling , EGFR Signaling Pathway , Neurotrophin Signaling Pathway , Thyroid Hormone Synthesis , Carbohydrate Homeostasis , Myometrial Relaxation and Contraction , M Phase , G-protein mediated Events , Signaling Events mediated by VEGFR1 and VEGFR2 , Interaction of EGFR with phospholipase C-gamma , Thromboxane A2 Receptor Signaling , VEGFR1 Specific Signals , Lipid Metabolism , SARS-CoV-2 Protein Interactome , The Global Phosphorylation Landscape of SARS-CoV-2 Infection

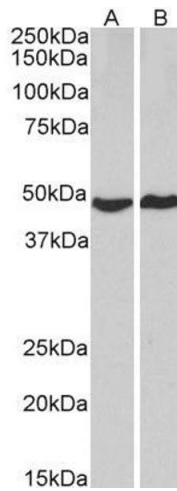
Application Details

Application Notes:	Western Blot: Approx 48 kDa band observed in lysates of cell line HeLa and MCF7 (calculated MW of 49.1 kDa according to NP_002721.1). Recommended concentration: 1-3 µg/mL. Peptide ELISA: antibody detection limit dilution 1:8000.
Restrictions:	For Research Use only

Handling

Format:	Liquid
Concentration:	0.5 mg/mL
Buffer:	Supplied at 0.5 mg/mL in Tris saline, 0.02 % sodium azide, pH 7.3 with 0.5 % bovine serum albumin.
Preservative:	Sodium azide
Precaution of Use:	This product contains Sodium azide: a POISONOUS AND HAZARDOUS SUBSTANCE which should be handled by trained staff only.
Handling Advice:	Minimize freezing and thawing.
Storage:	-20 °C
Storage Comment:	Aliquot and store at -20°C, with minimal freeze/thawing. A working aliquot may be refrigerated

at 4°C for a few weeks and still remain viable.



Western Blotting

Image 1. ABIN5539751 (2µg/ml) staining of HeLa (A) and MCF7 (B) lysates (35µg protein in RIPA buffer). Primary incubation was 1 hour. Detected by chemiluminescence.